

Table 1. Number of RT/IP access and amendment applications received by State Government (including Ministers) and USES A1

PORTFOLIO/AGENCY	Number of RT/IP access and amendment applications received
	no.
Premier and Cabinet	61
Aboriginal and Torres Strait Islander Partnerships	49
Agriculture and Fisheries	34
Communities, Child Safety and Disability Services	644
Police Service	2,377
Education and Training	328
Energy and Water Supply	100
Environment and Heritage Protection	175
Queensland Health	5,092
Housing and Public Works	222
Justice and Attorney-General	1,484
Infrastructure, Local Government and Planning	1,376
National Parks, Sport and Racing	32
Natural Resources and Mines	186
Science, Information Technology and Innovation	14
State Development	31
Tourism, Major Events, Small Business and The Commonwealth Games	6
Transport and Main Roads	794
Queensland Treasury	94
TOTAL	13,099

PORTFOLIO/AGENCY	Application type			
	RTI	IP	Amendment	Total
Premier and Cabinet	52	9	0	61
Aboriginal and Torres Strait Islander Partnerships	11	38	0	49
Agriculture and Fisheries	33	1	0	34
Communities, Child Safety and Disability Services	30	612	2	644
Police Service	1,355	1,017	5	2,377
Education and Training	114	204	10	328
Energy and Water Supply	71	29	0	100
Environment and Heritage Protection	168	7	0	175
Queensland Health	1,846	3,169	77	5,092
Housing and Public Works	149	71	2	222
Justice and Attorney-General	671	811	2	1,484
Infrastructure, Local Government and Planning	1,157	218	1	1,376
National Parks, Sport and Racing	29	3	0	32
Natural Resources and Mines	171	14	1	186
Science, Information Technology and Innovation	11	3	0	14
State Development	29	2	0	31
Tourism, Major Events, Small Business and The Commor	6	0	0	6
Transport and Main Roads	719	74	1	794
Queensland Treasury	61	33	0	94
TOTAL	6,683	6,315	101	13,099
state	5,526	6,097	100	11,723
local	1,157	218	1	1,376
For F1				
	RTI Access	IP Access	Applications	
State government	47.5	52.5		
Local government	84.1	15.9		

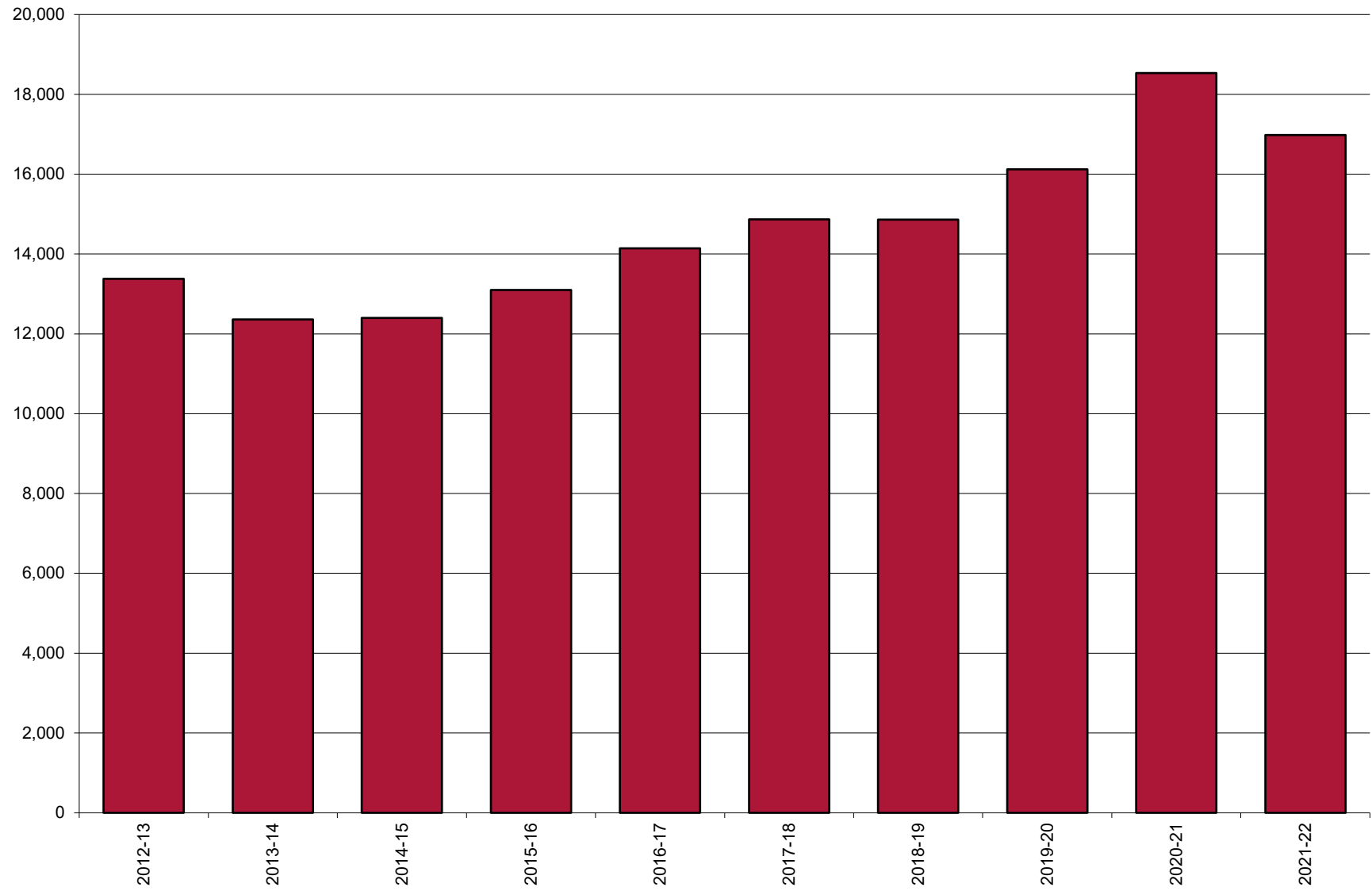
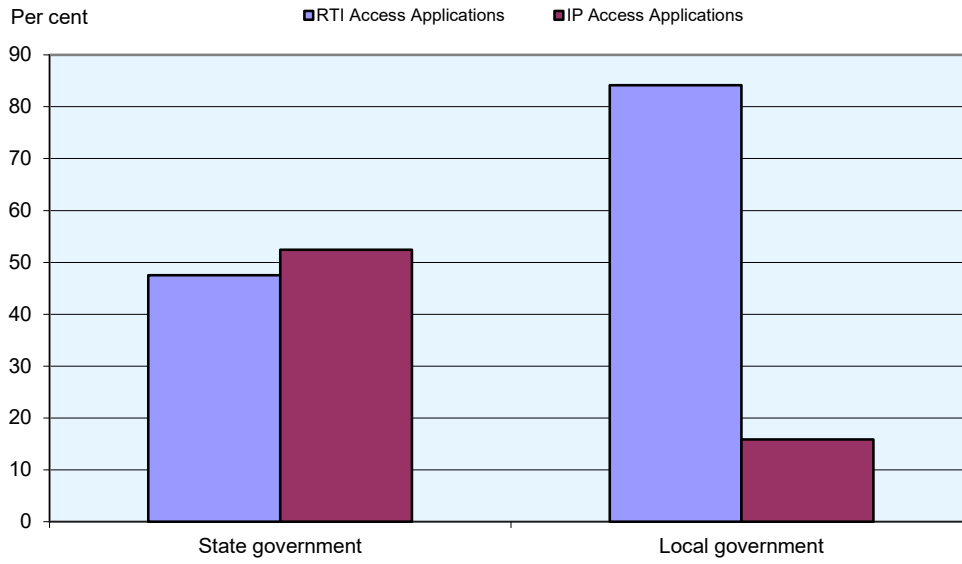


Table 2. Number of access and amendment applications received, 2000–01 to 2015-16 USES T1

Year	Number of RTI/IP /FOI access and amendment applications received
2005–06	12,106
2006–07	12,179
2007–08	13,320
2008–09	14,081
2009–10	13,722
2010–11	13,479
2011–12	13,099
2012-13	13,381
2013-14	12,358
2014-15	12,398
2015-16	13,099
2016-17	14,143
2017-18	14,870
2018-19	14,863
2019-20	16,121
2020-21	18,532
2021-22	16,979

Figure 1. State and local government RTI access applications and IP access applications, 2011-12

Use T1



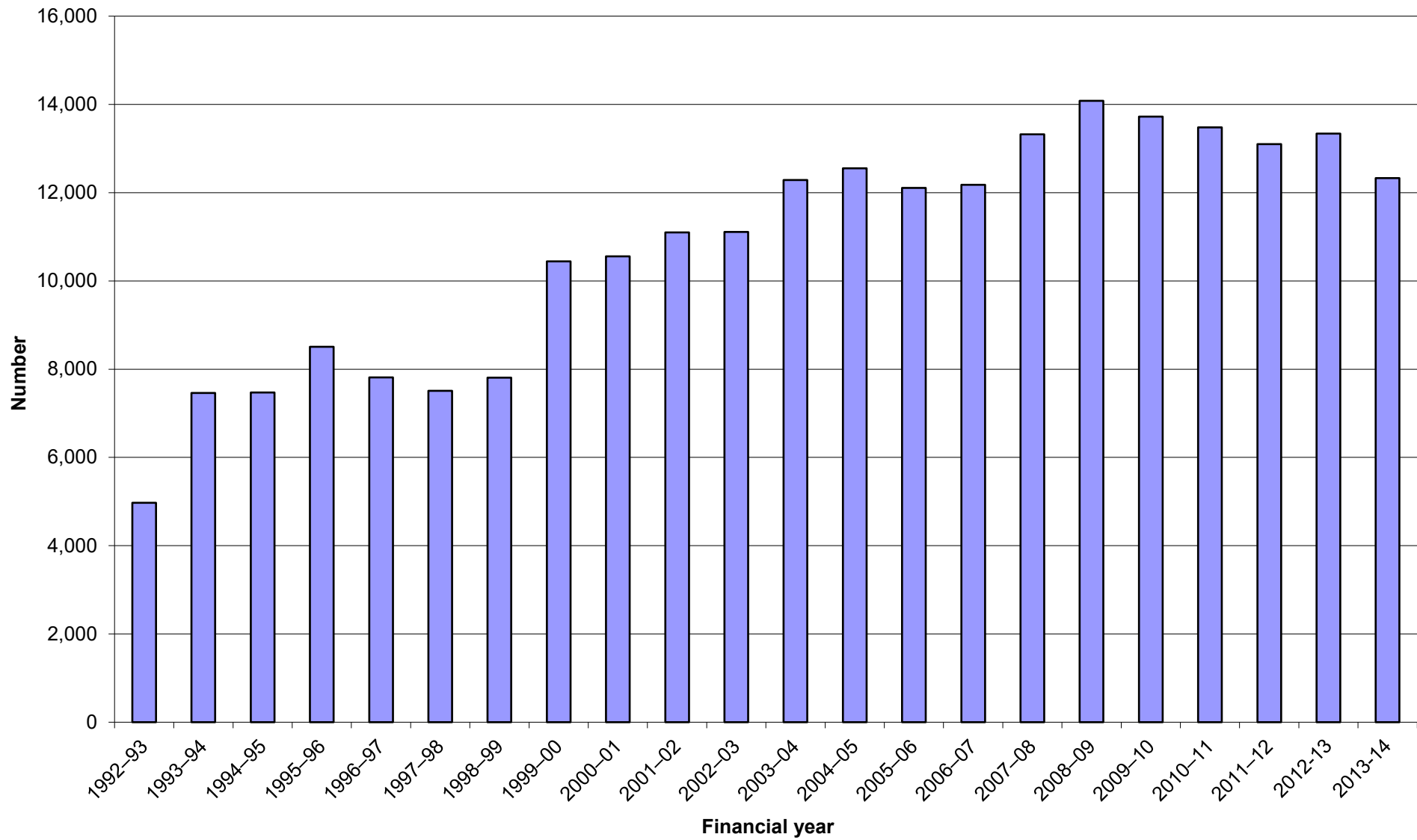
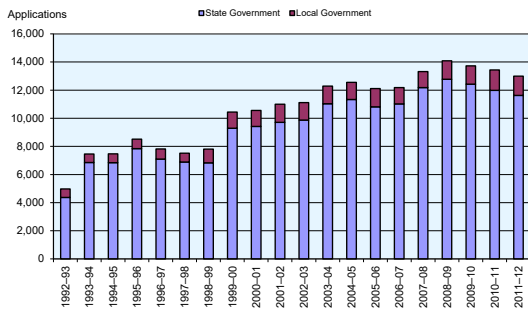


Figure 2. Access application by level of government, 1992-93 to 2011-12



Use T2

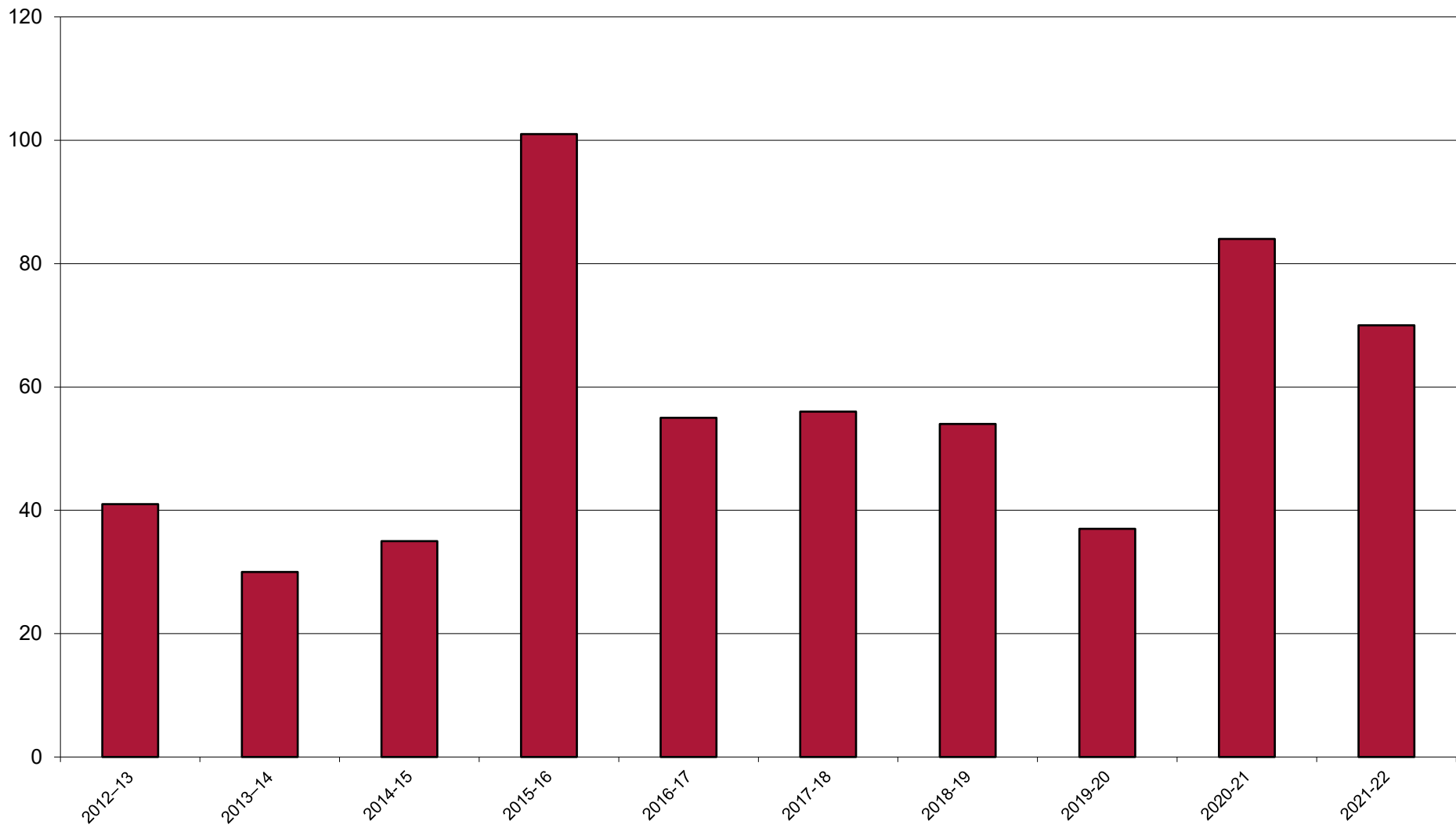
Financial year	State Government	Local Government	Total
--- applications ---			
1992-93	4,373	601	4,974
1993-94	6,859	604	7,463
1994-95	6,843	628	7,471
1995-96	7,837	671	8,508
1996-97	7,098	716	7,814
1997-98	6,885	626	7,511
1998-99	6,833	973	7,806
1999-00	9,286	1,158	10,444
2000-01	9,424	1,134	10,558
2001-02	9,708	1,289	11,101
2002-03	9,872	1,239	11,111
2003-04	11,029	1,259	12,288
2004-05	11,334	1,220	12,554
2005-06	10,815	1,291	12,106
2006-07	11,024	1,155	12,179
2007-08	12,183	1,137	13,320
2008-09	12,776	1,305	14,081
2009-10	12,428	1,294	13,722
2010-11	11,979	1,459	13,479
2011-12	11,623	1,375	13,101
2012-13	11,997	1,384	13,381
2013-14	11,083	1,275	12,358
2014-15			237,330
2015-16			237,259

Financial year Number	Total
1992-93	4,974
1993-94	7,463
1994-95	7,471
1995-96	8,508
1996-97	7,814
1997-98	7,511
1998-99	7,806
1999-00	10,444
2000-01	10,558
2001-02	11,101
2002-03	11,111
2003-04	12,288
2004-05	12,554
2005-06	12,106
2006-07	12,179
2007-08	13,320
2008-09	14,081
2009-10	13,722
2010-11	13,479
2011-12	13,101
2012-13	13,340
2013-14	12,328
	237,259

Table 3. Number of internal reviews received by Portfolio, 2016–17

USES A7

PORTFOLIO/AGENCY	Number of internal reviews received no.
Premier and Cabinet	1
Aboriginal and Torres Strait Islander Partnerships	1
Agriculture and Fisheries	3
Communities, Child Safety and Disability Services	11
Education and Training	14
Energy and Water Supply	7
Environment and Heritage Protection	8
Queensland Fire and Emergency Services	1
Queensland Health	16
Housing and Public Works	9
Infrastructure, Local Government and Planning	50
Justice and Attorney-General	45
National Parks, Sport and Racing	2
Natural Resources and Mines	16
Queensland Police Service	50
Public Safety Business Agency	1
Science, Information Technology and Innovation	0
State Development	2
Tourism, Major Events, Small Business and the Commonwealth Games	0
Transport and Main Roads	7
Queensland Treasury	16
TOTAL	260



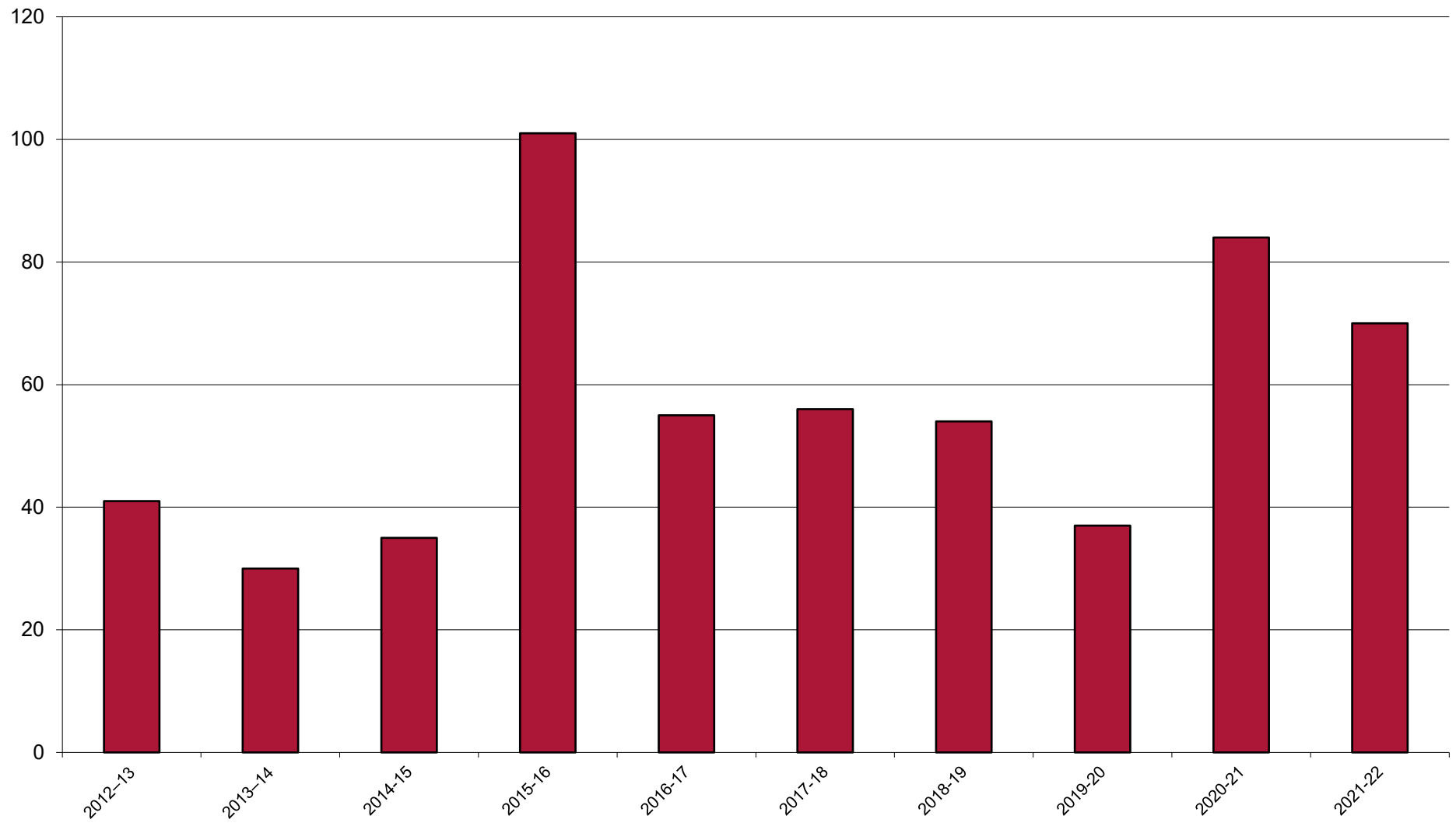
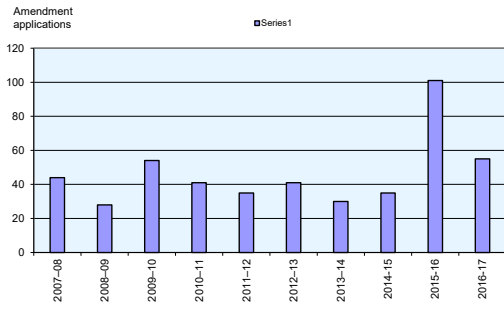


Figure 4. Number of IP amendment applications received by government type, 1992-93 to 2015-16



USES T1

Financial year	State Government	Local Government	Total
--- amendment applications ---			
2004-05	47	5	52
2005-06	28	4	32
2006-07	30	7	37
2007-08	35	9	44
2008-09	25	3	28
2009-10	54	0	54
2010-11	34	7	41
2011-12	100	1	101
2012-13	39	2	41
2013-14	28	2	30
2014-15	33	2	35
2015-16	100	1	101
2016-17			596

Financial year	Number
2004-05	52
2005-06	32
2006-07	37
2007-08	44
2008-09	28
2009-10	54
2010-11	41
2011-12	35
2012-13	41
2013-14	30
2014-15	35
2015-16	101
2016-17	55
2017-18	56
2018-19	54
2019-20	37
2020-21	84
2021-22	70
	886

Table 5. Amount of fees and charges by Portfolio, 2013–14

USES A9 and A10

PORTFOLIO/AGENCY	RTI			Total fees and charges received	IP Access Charges received
	Fees received	Processing charges received	Access Charges received		
		— \$ —			
Premier and Cabinet	1,170	1,038	0	2,208	0
Aboriginal and Torres Strait Islander and Multicultural Affairs	39	0	0	39	0
Agriculture, Fisheries and Forestry	350	0	24	374	0
Communities, Child Safety and Disability Services	14,463	8,026	0	22,489	0
Community Safety	3,507	2,992	420	6,919	0
Police Service	37,692	11,900	487	50,080	0
Education, Training and Employment	4,846	7,065	17	11,928	369
Energy and Water Supply	3,105	2,943	973	7,021	0
Environment and Heritage Protection	7,991	14,841	0	22,832	0
Queensland Health	46,239	34,335	1,355	81,930	974
Housing and Public Works	5,184	4,597	0	9,781	0
Justice and Attorney-General	45,669	29,696	2,572	77,937	0
Local Government	46,781	47,696	1,620	96,096	27
National Parks, Recreation, Sport and Racing	272	766	0	1,038	0
Natural Resources and Mines	7,368	25,734	5	33,107	0
Science, Information Technology, Innovation and the Arts	39	300	0	339	0
State Development, Infrastructure and Planning	1,635	12,084	0	13,719	0
Tourism, Major Events, Small Business and The Commonwealth Games	0	0	0	0	0
Transport and Main Roads	20,352	31,019	5,137	56,507	626
Queensland Treasury and Trade	1,914	1,914	0	3,828	0
TOTAL	248,616	236,947	12,610	498,173	1,996

2021/22	Pages considered	Pages refused	Pages released	%	Mean/Avg across 3 yrs	% Diff.
DPC	5,997	1,606	4,391	73.2%	61.1%	7.4%
DAF	7,618	3,237	4,381	57.5%	77.0%	-3.7%
DCYJMA	144,181	75,801	68,380	47.4%		
DCHDE	8,814	2,494	6,320	71.7%		
QCS	502,737	70,032	432,705	86.1%	62.9%	-13.0%
EDUCATION	178,942	71,825	107,117	59.9%		
DESBT	3,985	2,079	1,906	47.8%		
DEPW	169,376	37,561	131,815	77.8%		
DES	25,105	8,412	16,693	66.5%	80.3%	-6.1%
QFES	32,601	13,706	18,895	58.0%	61.7%	9.9%
HEALTH	2,096,394	203,497	1,892,897	90.3%	89.9%	-2.4%
DJAG	71,026	34,991	36,035	50.7%	76.4%	-5.2%
POLICE	51,473	39,439	12,034	23.4%	55.2%	-1.7%
DRDMW	8,778	2,592	6,186	70.5%		
RESOURCES	14,080	5,526	8,554	60.8%		
DSDSATSIP	10,777	2,729	8,048	74.7%		
DSDILGP	167,752	72,359	95,393	56.9%		
DTIS	546	210	336	61.5%		
DTMR	31,618	13,023	18,595	58.8%	36.1%	3.1%
QLD TREASURY	9,930	4,060	5,870	59.1%		
	3,541,730	665,179	2,876,551	81.2%	600.6%	-11.7%
2020/21 (updated figures as at 15/11/2022)	Pages considered	Pages refused	Pages released	%	Mean/Avg across 3 yrs	% Diff.
DPC	7,384	1,894	5,490	74.3%	61.1%	7.4%
DATSIP	1,279	175	1,104	86.3%	48.8%	33.5%
DAF	13,634	4,674	8,960	65.7%	77.0%	-3.7%
DCYJMA	112,999	54,251	58,748			
DCDSS	951	29	922	97.0%	52.3%	-22.7%
DCHDE	4,074	893	3,181	78.1%		
DCSYW	46,387	32,973	13,414			
QCS	410,011	85,442	324,569	79.2%	62.9%	-13.0%
EDUCATION	179,726	70,979	108,747	60.5%		
DEPW	144,176	20,648	123,528	85.7%		
DESBT	1,166	724	442	37.9%		
DES	37,661	11,992	25,669	68.2%	80.3%	-6.1%
QFES	925,826	8,624	917,202	99.1%	61.7%	9.9%
HEALTH	2,233,809	265,067	1,968,742	88.1%	89.9%	-2.4%
DHPW	2,096	1,289	807	38.5%	82.0%	-4.8%
DJAG	70,507	40,313	30,194	42.8%	76.4%	-5.2%
DLGRMA	231	73	158	68.4%		
DNRME	11,753	4,281	7,472	63.6%		
POLICE	70,485	52,378	18,107	25.7%	55.2%	-1.7%

PSBA	816	363	453	55.5%		
DRDM	0	0	0	#DIV/0!		
DRDMW	4,195	1,000	3,195	76.2%		
RESOURCES	10,655	4,506	6,149	57.7%		
DSDILGP	222,483	63,771	158,712	71.3%		
DSDSATSIP	7,735	2,181	5,554			
DSDTI	4,196	2,247	1,949	46.4%		
DTIS	415	219	196	47.2%		
DTMR	26,734	9,583	17,151	64.2%	36.1%	3.1%
QLD TREASURY	18,861	5,061	13,800	73.2%		
DYJ	41,652	9,613	32,039	76.9%	46.4%	-1.5%
	4,611,897	755,243	3,856,654	83.6%	830.1%	-7.2%
2020/21 (original figures)	Pages considered	Pages refused	Pages released	%	Mean/Avg across 3 yrs	% Diff.
DPC	7,384	1,894	5,490	74.3%	61.1%	7.4%
DATSIP	1,279	175	1,104	86.3%	48.8%	33.5%
DAF	13,634	4,674	8,960	65.7%	77.0%	-3.7%
DCYJMA	112,999	54,251				
DCDSS	951	29	922	97.0%	52.3%	-22.7%
DCHDE	4,074	893	3,181	78.1%		
DCSYW	46,387	32,973				
QCS	410,011	85,442	324,569	79.2%	62.9%	-13.0%
EDUCATION	179,726	70,979	108,747	60.5%		
DEPW	144,176	20,648	123,528	85.7%		
DESBT	1,166	724	442	37.9%		
DES	37,661	11,992	25,669	68.2%	80.3%	-6.1%
QFES	925,826	8,624	917,202	99.1%	61.7%	9.9%
HEALTH	2,233,809	265,067	1,968,742	88.1%	89.9%	-2.4%
DHPW	2,096	1,289	807	38.5%	82.0%	-4.8%
DJAG	70,507	40,313	30,194	42.8%	76.4%	-5.2%
DLGRMA	231	73	158	68.4%		
DNRME	11,753	4,281	7,472	63.6%		
POLICE	70,485	52,378	18,107	25.7%	55.2%	-1.7%
PSBA	816	363	453	55.5%		
DRDM	0	0	0	#DIV/0!		
DRDMW	4,195	1,000	3,195	76.2%		
RESOURCES	10,655	4,506	6,149	57.7%		
DSDILGP	222,483	63,771	158,712	71.3%		
DSDSATSIP	7,735	2,181				
DSDTI	4,196	2,247	1,949	46.4%		
DTIS	415	219	196	47.2%		
DTMR	26,734	9,583	17,151	64.2%	36.1%	3.1%
QLD TREASURY	18,861	5,061	13,800	73.2%		
DYJ	41,652	9,613	32,039	76.9%	46.4%	-1.5%
	4,611,897	755,243	3,778,938	81.9%	830.1%	-7.2%

2019/20	Pages considered	Pages refused	Pages released	%	Mean/Avg across 3 yrs	% Diff.
DPC	11,436	1,515	9,921	86.8%	61.1%	7.4%
DATSIP	2,229	469	1,760	79.0%	48.8%	33.5%
DAF	7,199	5,478	1,721	23.9%	77.0%	-3.7%
DCSYW	122,939	86,021	36,918	30.0%		
DCDSS	2,680	895	1,785	66.6%	52.3%	-22.7%
QCS	446,439	83,229	363,210	81.4%	62.9%	-13.0%
EDUCATION	123,752	48,637	75,115	60.7%		
DESBT	200	177	23	11.5%		
DES	39,045	10,773	28,272	72.4%	80.3%	-6.1%
QFES	32,592	6,340	26,252	80.5%	61.7%	9.9%
HEALTH	1,827,679	102,033	1,725,646	94.4%	89.9%	-2.4%
DHPW	113,673	14,592	99,081	87.2%	82.0%	-4.8%
DITID	3,506	3,148	358	10.2%		
DJAG	60,705	7,206	53,499	88.1%	76.4%	-5.2%
DLGRMA	186,261	53,772	132,489	71.1%		
DNRME	24,984	9,260	15,724	62.9%		
POLICE	55,974	43,003	12,971	23.2%	55.2%	-1.7%
PSBA	428	152	276	64.5%		
DRDM	0	0	0	#DIV/0!		
DSDMIP	1,962	1,119	843	43.0%	65.3%	3.7%
DSDTI	0	0	0	#DIV/0!		
DTMR	48,242	10,388	37,854	78.5%	36.1%	3.1%
QLD TREASURY	104,832	6,369	98,463	93.9%		
DYJ	105,867	23,848	82,019	77.5%	46.4%	-1.5%
TOTAL	3,322,624	518,424	2,804,200	84.4%	895.4%	-3.5%

2018/19	Pages considered	Pages refused	Pages released	%	Mean/Avg across 3 yrs	% Diff.
DPC	2,882	985	1,897	65.8%	61.1%	7.4%
DATSIP	4,149	2,172	1,977	47.7%	48.8%	33.5%
DAF	14,790	1,984	12,806	86.6%	77.0%	-3.7%
DCSYW	173,351	90,829	82,522	47.6%		
DCDSS	6,413	2,565	3,848	60.0%	52.3%	-22.7%
QCS	403,699	73,297	330,402	81.8%	62.9%	-13.0%
EDUCATION	182,635	39,353	143,282	78.5%		
DESBT	1,513	430	1,083	71.6%		
DES	48,908	13,289	35,619	72.8%	80.3%	-6.1%
QFES	23,486	4,546	18,940	80.6%	61.7%	9.9%
HEALTH	1,802,908	102,883	1,700,025	94.3%	89.9%	-2.4%
DHPW	138,654	23,382	115,272	83.1%	82.0%	-4.8%
DITIDCG	501	166	335	66.9%		
DJAG	84,994	46,775	38,219	45.0%	76.4%	-5.2%
DLGRMA	178,135	51,675	126,460	71.0%		

DNRME	52,052	13,949	38,103	73.2%		
POLICE	41,185	26,898	14,287	34.7%	55.2%	-1.7%
PSBA	22	22	0	0.0%		
DSDMIP	3,039	329	2,710	89.2%	65.3%	3.7%
DTMR	45,986	23,948	22,038	47.9%	36.1%	3.1%
QLD TREASURY	12,189	4,864	7,325	60.1%		
DYJ	8,127	1,825	6,302	77.5%	46.4%	-1.5%
	3,229,618	526,166	2,703,452	83.7%	895.4%	-3.5%

2017/18	Pages considered	Pages refused	Pages released	%	Mean/Avg across 3 yrs	% Diff.
DPC	14,247	1,413	12,834	90.1%	61.1%	7.4%
DATSIP	8,682	1,773	6,909	79.6%	48.8%	33.5%
DAF	7,543	2,839	4,704	62.4%	77.0%	-3.7%
DCSYW	97,189	59,677	37,512	38.6%		
DCDSS	79,656	47,829	31,827	40.0%	52.3%	-22.7%
EDUCATION	137,098	35,464	101,634	74.1%	62.9%	-13.0%
DESBT	27	14	13	48.1%		
DES	12,734	3,187	9,547	75.0%		
DEWS	1,208	279	929	76.9%	80.3%	-6.1%
DEHP	17,651	3,680	13,971	79.2%	61.7%	9.9%
QFES	31,913	4,875	27,038	84.7%		
HEALTH	1,515,722	64,053	1,451,669	95.8%	89.9%	-2.4%
DHPW	95,559	23,876	71,683	75.0%	82.0%	-4.8%
DITIDCG	173	32	141	81.5%		
DJAG	370,051	95,417	274,634	74.2%	76.4%	-5.2%
DILGP	3,445	573	2,872	83.4%	80.4%	-7.0%
DLGRMA	184,598	52,082	132,516	71.8%		
DNPSR	949	475	474	49.9%	35.0%	28.0%
DNRM	13,897	5,635	8,262	59.5%		
DNRME	21,539	5,207	16,332	75.8%	64.7%	-12.0%
POLICE	43,704	27,370	16,334	37.4%	55.2%	-1.7%
PSBA	38	97	-59	-155.3%		
DSITI	1,000	136	864	86.4%	65.3%	3.7%
DSD	559	209	350	62.6%	36.1%	3.1%
DSDMIP	15,059	7,810	7,249	48.1%		
DTMESBCG	1,090	558	532	48.8%	46.4%	-1.5%
DTMR	26,508	5,864	20,644	77.9%	77.8%	-1.3%
TREASURY	74,138	21,515	52,623	71.0%	40.5%	10.6%
	2,775,977	471,939	2,304,038	83.0%	1193.8%	14.8%
2016/17	Pages considered	Pages refused	Pages released	%	Mean/Avg across 3 yrs	% Diff.
DPC	2,490	472	2,018	81.0%	61.1%	7.4%
DATSIP	4,058	927	3,131	77.2%	48.8%	33.5%

over 2 yrs

DAF	6,888	2,501	4,387	63.7%	77.0%	-3.7%
DCCSDS	196,614	138,531	58,083	29.5%	52.3%	-22.7%
DET	63,673	26,228	37,445	58.8%	62.9%	-13.0%
DEWS	11,168	1,785	9,383	84.0%	80.3%	-6.1%
DEHP	25,397	6,217	19,180	75.5%	61.7%	9.9%
QFES	14,466	3,597	10,869	75.1%		
HEALTH	1,455,132	90,030	1,365,102	93.8%	89.9%	-2.4%
DHPW	110,136	25,944	84,192	76.4%	82.0%	-4.8%
DJAG	384,949	112,241	272,708	70.8%	76.4%	-5.2%
DILGP	196,804	58,875	137,929	70.1%	80.4%	-7.0%
DNPSR	3,526	1,217	2,309	65.5%	35.0%	28.0%
DNRM	25,799	8,985	16,814	65.2%	64.7%	-12.0%
POLICE	40,781	18,020	22,761	55.8%	55.2%	-1.7%
PSBA	1,581	436	1,145	72.4%		
DSITI	2,729	1,750	979	35.9%	65.3%	3.7%
DSD	797	2,192	-1,395	-175.0%	36.1%	3.1%
DTMESBCG	327	111	216	66.1%	46.4%	-1.5%
DTMR	21,463	3,212	18,251	85.0%	77.8%	-1.3%
TREASURY	124,350	29,707	94,643	76.1%	40.5%	10.6%
	2,693,128	532,978	2,160,150	80.2%	1193.8%	14.8%

over 2 yrs

2015/16	Pages considered	Pages refused	Pages released	%	Mean/Avg across 3 yrs	% Diff.
DPC	3,122	1,620	1,502	48.1%	61.1%	7.4%
DATSIP	3,855	1,027	2,828	73.4%	48.8%	33.5%
DAF	2,919	617	2,302	78.9%	77.0%	-3.7%
DCCSDS	167,894	108,949	58,945	35.1%	52.3%	-22.7%
DET	56,986	18,663	38,323	67.2%	62.9%	-13.0%
DEWS	12,507	4,393	8,114	64.9%	80.3%	-6.1%
DEHP	22,406	4,743	17,663	78.8%	61.7%	9.9%
HEALTH	1,251,233	71,511	1,179,722	94.3%	89.9%	-2.4%
DHPW	83,166	17,336	65,830	79.2%	82.0%	-4.8%
DJAG	471,814	121,494	350,320	74.2%	76.4%	-5.2%
DILGP	155,304	35,386	119,918	77.2%	80.4%	-7.0%
DNPSR	2,732	1,165	1,567	57.4%	35.0%	28.0%
DNRM	15,743	5,631	10,112	64.2%	64.7%	-12.0%
POLICE	73,899	40,300	33,599	45.5%	55.2%	-1.7%
DSITI	411	239	172	41.8%	65.3%	3.7%
DSD	1,252	1,005	247	19.7%	36.1%	3.1%
DTMESMCG	26	3	23	88.5%	46.4%	-1.5%
DTMR	23,859	4,715	19,144	80.2%	77.8%	-1.3%
TREASURY	12,198	7,848	4,350	35.7%	40.5%	10.6%
	2,361,326	446,645	1,914,681	81.1%	1193.8%	14.8%

over 2 yrs

2014/15	Pages considered	Pages refused	Pages released	%	Mean/Avg across 3 yrs	% Diff.
---------	------------------	---------------	----------------	---	-----------------------	---------

DPC		14,795		4,199		10,596		71.6%	61.1%	7.4%
DATSIP		1,900		332		1,568		82.5%	48.8%	33.5%
DAF		5,652		1,198		4,454		78.8%	77.0%	-3.7%
DCCSDS		214,032		161,442		52,590		24.6%	52.3%	-22.7%
DET		46,019		19,100		26,919		58.5%	62.9%	-13.0%
DEWS		19,185		11,680		7,505		39.1%	80.3%	-6.1%
DEHP		21,539		5,338		16,201		75.2%	61.7%	9.9%
HEALTH		839,565		64,467		771,750		91.9%	89.9%	-2.4%
DHPW		53,393		11,370		42,023		78.7%	82.0%	-4.8%
DJAG		434,918		79,838		355,089		81.6%	76.4%	-5.2%
DILGP		179,453		43,674		135,783		75.7%	80.4%	-7.0%
DNPSR		7,546		4,639		2,907		38.5%	35.0%	28.0%
DNRM		21,135		6,975		14,160		67.0%	64.7%	-12.0%
POLICE		58,279		32,063		26,216		45.0%	55.2%	-1.7%
DSITI		3,623		499		3,124		86.2%	65.3%	3.7%
DSD		6,455		3,281		3,174		49.2%	36.1%	3.1%
DTMESMCG		6,444		849		5,595		86.8%	46.4%	-1.5%
DTMR		41,201		17,454		23,747		57.6%	77.8%	-1.3%
TREASURY		12,248		5,064		7,184		58.7%	40.5%	10.6%
		1,987,382		473,462		1,510,585		76.0%	1193.8%	14.8%

over 2 yrs

2013/14		Pages considered		Pages refused		Pages released		%	Mean/Avg across 3 yrs	% Diff.
DPC		8,756		2,760		5,996		68.5%	61.1%	7.4%
DATSIMA		2,227		395		1,832		82.3%	48.8%	33.5%
DAFF		4,353		1,162		3,191		73.3%	77.0%	-3.7%
DCCSDS		248,687		174,956		73,731		29.6%	52.3%	-22.7%
DCS		24,744		6,179		18,565		75.0%	82.3%	-7.3%
DETE		52,011		26,046		25,965		49.9%	62.9%	-13.0%
DEWS		27,538		7,102		20,436		74.2%	80.3%	-6.1%
DEHP		40,798		11,584		29,214		71.6%	61.7%	9.9%
HEALTH		729,691		91,014		638,677		87.5%	89.9%	-2.4%
DHPW		65,940		15,027		50,913		77.2%	82.0%	-4.8%
DJAG		392,505		111,890		280,615		71.5%	76.4%	-5.2%
DLGRR		146,163		38,845		107,318		73.4%	80.4%	-7.0%
DNPRSR		1,499		555		944		63.0%	35.0%	28.0%
DNRM		28,722		13,599		15,123		52.7%	64.7%	-12.0%
POLICE		48,479		22,562		25,917		53.5%	55.2%	-1.7%
PSBA	New	2,122		818		1,304		61.5%		
DSITIA		3,171		983		2,188		69.0%	65.3%	3.7%
DSDIP		19,165		11,655		7,510		39.2%	36.1%	3.1%
DTMESMCG		267		147		120		44.9%	46.4%	-1.5%
DTMR		55,277		12,988		42,289		76.5%	77.8%	-1.3%
TREASURY		9,037		4,422		4,615		51.1%	40.5%	10.6%

over 2 yrs

		1,911,152		554,689		1,356,463		71.0%	1276.1%	7.5%
--	--	-----------	--	---------	--	-----------	--	-------	---------	------

2012/13	Pages considered (v.1)	Pages considered	Pages refused (v.1)	Pages refused	Pages released (v.1)	Pages released	% (v.1)	%	Mean/Avg across 3 yrs	% Diff.
DPC	12,041	12,041	5,323	5,323	6,718	6,718	55.8%	55.8%	61.1%	-5.3%
DATSIMA	1,164	1,164	986	986	178	178	15.3%	15.3%	48.8%	-33.5%
DAFF	7,420	7,420	1,412	1,412	6,008	6,008	81.0%	81.0%	77.0%	4.0%
DCCSDS	181,787	181,787	114,141	114,141	67,646	67,646	37.2%	37.2%	52.3%	-15.1%
DCS	82,726	82,746	15,601	15,982	67,125	66,764	81.1%	80.7%	82.3%	-1.6%
DETE	65,077	65,077	25,311	25,311	39,766	39,766	61.1%	61.1%	62.9%	-1.8%
DEWS	43,131	43,131	5,465	5,465	37,666	37,666	87.3%	87.3%	80.3%	7.0%
DEHP	18,300	18,300	7,609	7,609	10,691	10,691	58.4%	58.4%	61.7%	-3.3%
HEALTH	656,162	699,401	77,277	77,277	578,885	622,124	88.2%	89.0%	89.9%	-0.9%
DHPW	123,948	123,948	22,448	22,448	101,500	101,500	81.9%	81.9%	82.0%	-0.1%
DJAG	227,706	227,706	58,390	58,390	169,316	169,316	74.4%	74.4%	76.4%	-2.0%
DLGCR	189,863	189,863	40,443	37,510	149,420	152,353	78.7%	80.2%	80.4%	-0.2%
DNPRSR	2,665	2,665	2,469	2,469	196	196	7.4%	7.4%	35.0%	-27.6%
DNRM	23,316	23,316	8,413	8,413	14,903	14,903	63.9%	63.9%	64.7%	-0.8%
POLICE	53,216	53,216	31,352	31,443	21,864	21,773	41.1%	40.9%	55.2%	-14.3%
DSITIA	9,574	9,574	4,852	4,852	4,722	4,722	49.3%	49.3%	65.3%	-16.0%
DSDIP	0	30,511	20,975	20,975	0	9,536	0.0%	31.3%	36.1%	-4.8%
DTMESMCG	1,058	1,058	552	552	506	506	47.8%	47.8%	46.4%	1.4%
DTMR	51,985	51,560	13,273	13,273	38,712	38,287	74.5%	74.3%	77.8%	-3.5%
TREASURY	15,463	15,463	12,196	12,126	3,267	3,337	21.1%	21.6%	40.5%	-18.9%
	1,766,602	1,839,947	468,488	465,957	1,319,089	1,373,990	74.7%	74.7%	1276.1%	-137.3%

2011/12		Pages considered	Pages refused		Pages released		%	Mean/Avg across 3 yrs	% Diff.
DPC		820	335		485		59.1%	61.1%	-2.0%
DATSIMA	incl in DCCSDS							48.8%	
DAFF		620	145		475		76.6%	77.0%	-0.4%
DCCSDS		201,870	20,075		181,795		90.1%	52.3%	37.8%
DCS		78,136	6,854		71,282		91.2%	82.3%	8.9%
DETE		76,071	17,017		59,054		77.6%	62.9%	14.7%
DEWS		7,797	1,602		6,195		79.5%	80.3%	-0.8%
DEHP (was DERM)		77,405	34,751		42,654		55.1%	61.7%	-6.6%
HEALTH		738,255	49,103		689,152		93.3%	89.9%	3.4%
DHPW		60,144	7,893		52,251		86.9%	82.0%	4.9%
DJAG		180,208	29,382		150,826		83.7%	76.4%	7.3%
DLGP		198,420	24,633		173,787		87.6%	80.4%	7.2%
DNPRSR		1,850	1,208		642		34.7%	35.0%	-0.3%
DNRM		24,427	5,466		18,961		77.6%	64.7%	12.9%
POLICE		53,752	15,482		38,270		71.2%	55.2%	16.0%
DSITIA		2,115	475		1,640		77.5%	65.3%	12.2%
DSDIP		10,208	6,340		3,868		37.9%	36.1%	1.8%
DTMESMCG	Nil							46.4%	

DTMR		43,921		7,597		36,324		82.7%	77.8%	4.9%
TREASURY		6,269		3,216		3,053		48.7%	40.5%	8.2%
		1,762,288		231,574		1,530,714		86.9%	1276.1%	130.1%