



Queensland Consolidated Acts

[\[Index\]](#) [\[Table\]](#) [\[Search\]](#) [\[Search this Act\]](#) [\[Notes\]](#) [\[Noteup\]](#) [\[Previous\]](#) [\[Next\]](#) [\[Download\]](#) [\[Help\]](#)

Liquor Act 1992 - SECT 142ZZB

142ZZB Providing a safe environment and preserving amenity 142ZZB Providing a safe environment and preserving amenity

(1) A licensee or permittee must, in the conduct of business on the relevant premises, provide and maintain a safe environment in and around the relevant premises.

Maximum penalty—100 penalty units.

(2) A licensee or permittee must, in the conduct of business on the relevant premises, take all reasonable steps to ensure the use of the premises does not adversely affect the amenity of the area in which the premises are located.

Maximum penalty—100 penalty units.

(3) A licensee or permittee must, in the conduct of business on the relevant premises, take all reasonable steps to ensure the behaviour of persons entering or leaving the premises does not adversely affect the amenity of the area in which the premises are located.

Maximum penalty—100 penalty units.

(4) If a licensee or permittee knows or has reason to believe that a relevant offence is being, or is about to be, committed in or around the relevant premises, the licensee or permittee must take reasonable steps to stop or prevent the commission of the offence.

Maximum penalty—100 penalty units.

(5) For subsection (4), an offence is a relevant offence if the commission of the offence may reasonably be expected to have an adverse impact on—

- (a) the health and safety of a person in or around the relevant premises; or
- (b) the amenity of the area in which the premises are located.

(6) A licensee or permittee must, in the conduct of business on the relevant premises, engage in the positive practices prescribed by regulation for this section.

Maximum penalty—100 penalty units.

(7) A licensee or permittee must not, in the conduct of business on the relevant premises, engage in, or allow another person to engage in, an unacceptable practice prescribed by regulation for this section.

Maximum penalty—100 penalty units.

(8) A regulation may prescribe a practice to be a positive practice for subsection (6) or an unacceptable practice for subsection (7) for the purposes of—

(a) providing and maintaining a safe environment in and around licensed premises and premises to which permits relate; and

(b) ensuring the use of the premises does not adversely affect the amenity of the areas in which they are located.

[\[Index\]](#) [\[Table\]](#) [\[Search\]](#) [\[Search this Act\]](#) [\[Notes\]](#) [\[Noteup\]](#) [\[Previous\]](#) [\[Next\]](#) [\[Download\]](#) [\[Help\]](#)



Queensland Consolidated Acts

[\[Index\]](#) [\[Table\]](#) [\[Search\]](#) [\[Search this Act\]](#) [\[Notes\]](#) [\[Noteup\]](#) [\[Previous\]](#) [\[Next\]](#) [\[Download\]](#) [\[Help\]](#)

Liquor Act 1992 - SECT 156

156 Liquor prohibited to certain persons 156 Liquor prohibited to certain persons

(1) A person must not, on premises to which a licence or permit relates—

- (a) supply liquor to; or
- (b) permit or allow liquor to be supplied to; or
- (c) allow liquor to be consumed by;

a person who—

- (d) is a minor; or
- (e) is unduly intoxicated or disorderly.

(2) A person must not, on a street or place adjacent to premises to which a licence or permit relates, or in a public place supply liquor, or cause or permit liquor to be supplied, to a minor.

(3) A person must not send, or cause or permit to be sent, to premises to which a licence or permit relates a minor with a view to the minor or another person being supplied with liquor.

Maximum penalty for subsections (1) to (3)—

(a) for an offence committed by the licensee or permittee of, or an approved manager working at, the premises—

- (i) if the person to whom the offence relates is a minor—250 penalty units; or
- (ii) if the person to whom the offence relates is unduly intoxicated or disorderly—500 penalty units; or

(b) for an offence committed other than by the licensee or permittee of, or an approved manager working at, the premises—

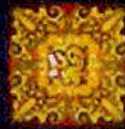
- (i) if the person to whom the offence relates is a minor—80 penalty units; or
- (ii) if the person to whom the offence relates is unduly intoxicated or disorderly—80 penalty units.

(4) Subsection (2) does not apply to the supply of liquor to a minor in a public place, designated under section 173C, if the minor is accompanied by a responsible adult who is responsibly supervising the minor.

[\[Index\]](#) [\[Table\]](#) [\[Search\]](#) [\[Search this Act\]](#) [\[Notes\]](#) [\[Noteup\]](#) [\[Previous\]](#) [\[Next\]](#) [\[Download\]](#) [\[Help\]](#)

FREE GAMES

8 FREE GAMES ARE TRIGGERED
BY 3 OR MORE  LEFT TO RIGHT.



A, K, Q, J, 10

AND 9

DO NOT APPEAR DURING THE FREE GAMES.



DURING THE FREE GAMES MORE  MAY APPEAR.

THE CREDITS BET PER PLAY AND THE NUMBER OF GOLD SYMBOLS CHOSEN IS THE SAME AS

THE GAME THAT TRIGGERED THE FREE GAMES.

FREE GAMES CAN BE TRIGGERED AGAIN DURING THE FREE GAMES.

ARSA 210



([HTTPS://USSPORTSDOWNUNDER.COM/](https://USSPORTSDOWNUNDER.COM/))

(<https://ussportsdownunder.com/cart>)

Welcome to the USSDU Blog covering NFL, NBA, MLB, NHL & NCAA updates for US Sports fans in Australia & New Zealand.

[HOME \(HTTPS://USSPORTSDOWNUNDER.COM/\)](https://USSPORTSDOWNUNDER.COM/) /
[BLOG \(HTTPS://USSPORTSDOWNUNDER.COM/BLOG/\)](https://USSPORTSDOWNUNDER.COM/BLOG/) /
[NFL \(HTTPS://USSPORTSDOWNUNDER.COM/BLOG/NFL/\)](https://USSPORTSDOWNUNDER.COM/BLOG/NFL/)

BEST PLACES IN AUSTRALIA TO WATCH SUPER BOWL 50 IN 2016



Find the best Super Bowl venues, events & parties in Melbourne, Sydney, Brisbane & around Australia to watch Super Bowl 50 in 2016.

895
SHARES

Facebook (<http://www.facebook.com/sharer.php?u=https%3A%2F%2Fussportsdownunder.com%2Fbest-places-in-australia-to-watch-super-bowl-50-in-2016%2F>)

Twitter (<https://twitter.com/intent/tweet?text=Best%20Places%20In%20Australia%20To%20Watch%20Super%20Bowl%2050%20In%202016&via=ussportsdwnundr&url=https%3A%2F%2Fussportsdownunder.com%2Fbest-places-in-australia-to-watch-super-bowl-50-in-2016%2F>)

[Subscribe](#)

The 2016 Super Bowl is expected to be bigger and better as the NFL celebrates it's 50th Super Bowl and we have your back with the ultimate list of the biggest and best Super Bowl parties and events in Australia.

Make sure to visit the listing weekly as we will be adding new events all the way up to the big game on the 8th of Feb.

Please note that we will only add events & venues that [fill out our listing form \(https://ussportsdownunder.com/contact/list-super-bowl-venueevent/\)](https://ussportsdownunder.com/contact/list-super-bowl-venueevent/).



SUPER BOWL 50 INFO

- Date: Monday February 8th 2016
- Teams: Denver Broncos v Carolina Panthers
- Estimated Kickoff: 10.30am (AEDT timezone)
- Estimated Finish: 2pm (time may vary)
- Channels: ESPN & 7Mate [see full TV Guide here](https://ussportsdownunder.com/australian-nfl-tv-guide/) (<https://ussportsdownunder.com/australian-nfl-tv-guide/>)
- Stadium: Levi's Stadium, Santa Clara, California
- US Network & Announcers: CBS - Jim Nantz &, Phil Simms
- Entertainment: Coldplay & Beyonce (Halftime Show)

VENUE MAP

JUMP TO A STATE:

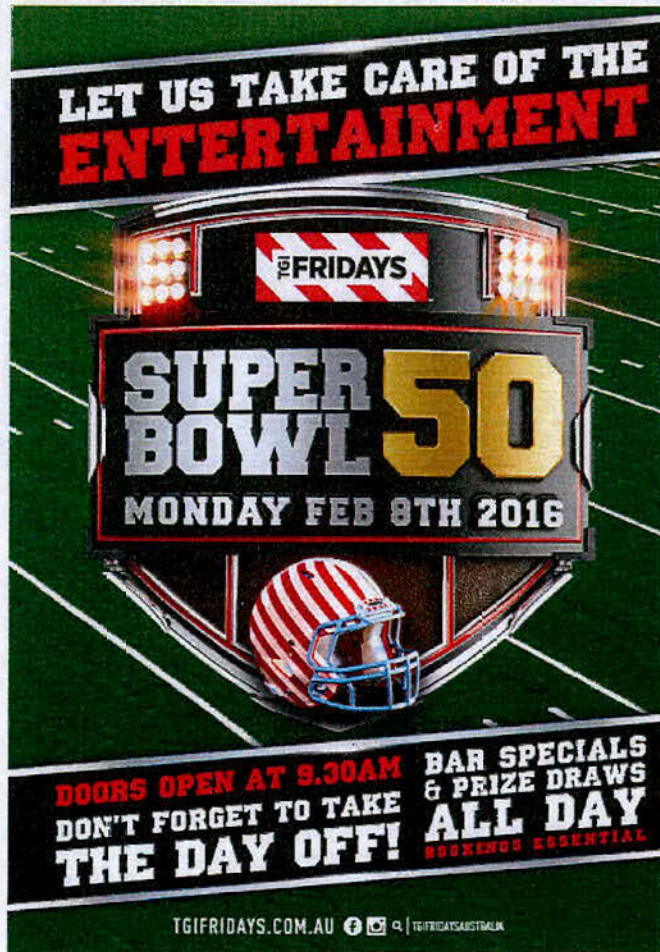
[VIC](#) | [NSW](#) | [ACT](#) | [QLD](#) | [SA](#) | [WA](#) | [TAS](#) | [NT](#)

VICTORIA

VENUE
DESCRIPTION
CONTACT



TGI Fridays



<http://tgifridays.com.au>

Shop 8

500 Chapel Street,

South Yarra

[Map It \(http://maps.google.com/maps?q=Shop+8+500+Chapel+Street%2C+South+Yarra+Victoria%2C+3141+Australia\)](http://maps.google.com/maps?q=Shop+8+500+Chapel+Street%2C+South+Yarra+Victoria%2C+3141+Australia)

(03) 9826 5044

[Visit Website \(http://www.tgifridays.com.au/\)](http://www.tgifridays.com.au/)

- Doors open at 9.30am
- \$25 Coors Beer Buckets
- Jarryd Hayne jersey give-aways
- Door Prizes
- See the game Live at any of our TGI Fridays Restaurants

FIND OUT MORE ([HTTP://WWW.TGIFRIDAYS.COM.AU/WP-CONTENT/THEMES/WPS-THEME/_/PDF/TGIF_SUPER_BOWL_MENU.PDF](http://www.tgifridays.com.au/wp-content/themes/wps-theme/_/pdf/tgif_super_bowl_menu.pdf))

The Sporting Globe Super Bow Party



(http://sportinglobe.com.au/superbowl?utm_source=US%20Sports%20Down%20Under&utm_medium=2016%20Super%20Bowl%20listing&utm_campaign=2016%20Super%20Bowl%20listing)

Richmond

288 Bridge Road
Richmond

[Map It \(http://maps.google.com/maps?q=Richmond+288+Bridge+Road%2C+Victoria+3121+Australia\)](http://maps.google.com/maps?q=Richmond+288+Bridge+Road%2C+Victoria+3121+Australia)

(03) 9428 2636

Geelong

175 Rylie Street
Geelong

[Map It \(https://www.google.com.au/maps/place/The+Sporting+Globe,+Geelong/@-38.14952,144.361044,17z/data=!3m1!4b1!4m2!3m1!1s0x6ad4141b873d44c7:0xa42b72edd043bb84\)](https://www.google.com.au/maps/place/The+Sporting+Globe,+Geelong/@-38.14952,144.361044,17z/data=!3m1!4b1!4m2!3m1!1s0x6ad4141b873d44c7:0xa42b72edd043bb84)

(03) 5224 2600

Fountain Gate

Westfield Shopping Center
Narre Warren

[Map It \(https://www.google.com.au/maps/place/The+Sporting+Globe+Bar+%26+Grid/@-38.018416,-45.302712,17z/data=!3m1!4b1!5s0x6ad617526df122b7:0x55f0c588a0fb1d3c14m2!3m1!1s0x6ad6175210d57cf1:0xfc931269674c4033\)](https://www.google.com.au/maps/place/The+Sporting+Globe+Bar+%26+Grid/@-38.018416,-45.302712,17z/data=!3m1!4b1!5s0x6ad617526df122b7:0x55f0c588a0fb1d3c14m2!3m1!1s0x6ad6175210d57cf1:0xfc931269674c4033)

Moonee Ponds

690 Mt Alexander Road
Moonee Ponds

[Map It \(https://www.google.com.au/maps/place/The+Sporting+Globe,+Mocnee+Ponds/@-37.768807,144.925577,17z/data=!3m1!4b1!4m2!3m1!1s0x6ad65cf1a7bfbcb3:0x18b9427ad19253d9\)](https://www.google.com.au/maps/place/The+Sporting+Globe,+Mocnee+Ponds/@-37.768807,144.925577,17z/data=!3m1!4b1!4m2!3m1!1s0x6ad65cf1a7bfbcb3:0x18b9427ad19253d9)

(03) 9372 7322

Watergardens

Station Street
Watergardens Town Centre

[Map It \(https://www.google.com.au/maps/place/The+Sporting+Globe,+Watergardens/@-37.629299,144.774864,17z/data=!3m1!4b1!5s0x6ad6f5fb2da83b89:0x9b1cebfd6a2f56514m2!3m1!1s0x6ad6f5fada772113:0xae032bb433a6a2aa\)](https://www.google.com.au/maps/place/The+Sporting+Globe,+Watergardens/@-37.629299,144.774864,17z/data=!3m1!4b1!5s0x6ad6f5fb2da83b89:0x9b1cebfd6a2f56514m2!3m1!1s0x6ad6f5fada772113:0xae032bb433a6a2aa)

(03) 8358 2877

Werribee

Derrimut Rd
Werribee

[Map It \(https://www.google.com.au/maps/place/The+Sporting+Globe,+Werribee/@-37.875568,144.681987,15z/data=!4m2!3m1!1s0x0:0x1ca343:9b77f3bc0?sa=X&ved=0ahUKewi1k:5bplDKAhJIG6YKHU_pD0AQ_BllazAN\)](https://www.google.com.au/maps/place/The+Sporting+Globe,+Werribee/@-37.875568,144.681987,15z/data=!4m2!3m1!1s0x0:0x1ca343:9b77f3bc0?sa=X&ved=0ahUKewi1k:5bplDKAhJIG6YKHU_pD0AQ_BllazAN)

(03) 9748 5777

- FREE Entry
- Our famous Buffalo Wings
- Great atmosphere with all the action LIVE on over 50 + screens
- The TSG Cheerleaders
- Buckets of Buds
- Live feed of special comments/appearance by ex AFL & NFL star Ben Graham at Geelong venue
- Don't miss out visit our website and reserve your spot today!



BOOK TICKETS ([HTTP://SPORTINGGLOBE.COM.AU/SUPERBOWL?UTM_SOURCE=US%20SPORTS%20DOWN%20UNDER&UTM_MEDIUM=2016%20SUPER%20BOWL%20LISTING&UTM_CAMPAIGN=2016%20SUPER%20BOWL%20LISTING](http://SPORTINGGLOBE.COM.AU/SUPERBOWL?UTM_SOURCE=US%20SPORTS%20DOWN%20UNDER&UTM_MEDIUM=2016%20SUPER%20BOWL%20LISTING&UTM_CAMPAIGN=2016%20SUPER%20BOWL%20LISTING))

Melbourne Public

11 Dukes Walk
South Wharf

[Map It \(<http://maps.google.com/maps?q=11+Dukes+Walk+South+Wharf%2C+Victoria+3006+Australia>\)](http://maps.google.com/maps?q=11+Dukes+Walk+South+Wharf%2C+Victoria+3006+Australia)



<http://www.superbowl50.com.au>

- Live on 9 Screens, including a Massive 8 Foot Projector Screen with Full commentary!
- DJ's and Entertainment
- General Admission, Table bookings from \$20
- Beer & Food Specials
- Private VIP Booths Available

(03) 9268 7600

[Visit Website \(<http://www.superbowl50.com.au>\)](http://www.superbowl50.com.au)

P.J O'Briens - Southbank

G12-16 Southgate
Southbank

[Map It \(<http://maps.google.com/maps?q=G12-16+Southgate+Restaurant+%26amp%3B+Shopping+Precinct+Southbank%2C+Melbourne+Vic++3006+Australia>\)](http://maps.google.com/maps?q=G12-16+Southgate+Restaurant+%26amp%3B+Shopping+Precinct+Southbank%2C+Melbourne+Vic++3006+Australia)





https://ussportsdownunder.com/v3/wp-content/uploads/2015/12/IMG_8934.jpg

- Doors open at 9am
- Watch the Super Bowl Live & Loud on all screens
- American food & beer menu, Coors buckets \$25
- Booking advised 03 96865011

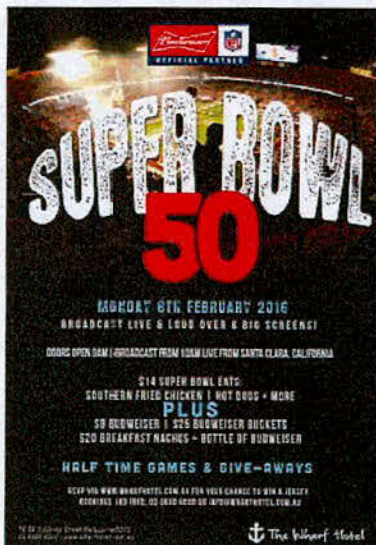
(03) 9686 5011

[Visit Website \(http://www.pjobriens.com.au\)](http://www.pjobriens.com.au)

The Wharf Hotel

WTC Wharf
18/38 Siddeley Street
Melbourne

[Map It \(http://maps.google.com/maps?q=WTC+Wharf+18%2F38+Siddeley+Street%2C+Melbourne+Victoria+Australia\)](http://maps.google.com/maps?q=WTC+Wharf+18%2F38+Siddeley+Street%2C+Melbourne+Victoria+Australia)



https://ussportsdownunder.com/v3/wp-content/uploads/2015/12/WH_superBowl50_16.jpg

- Doors open 9am
- Catch all the action LIVE & LOUD over 8 big screens!
- Half time games & give-aways
- \$14 Super Bowl Eats: Fried chicken, hot dogs + more. \$25 Buckets of Budweiser
- RSVP via www.wharfhotel.com.au for your chance to win a jersey

(03) 8680 6000

[Visit Website \(http://www.wharfhotel.com.au\)](http://www.wharfhotel.com.au)

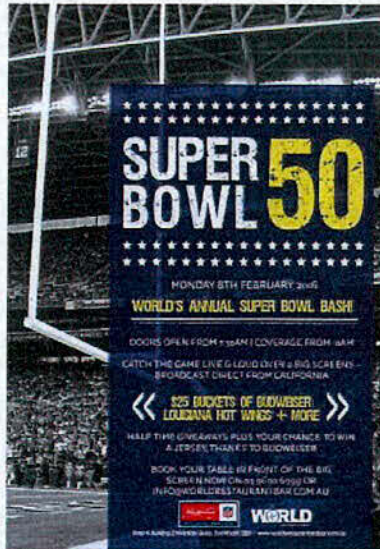




World Restaurant & Bar

4/2 Riverside Quay
Southbank

[Map It \(http://maps.google.com/maps?q=4%2F2+Riverside+Quay+Southbank%2C+Melbourne+Victoria+Australia\)](http://maps.google.com/maps?q=4%2F2+Riverside+Quay+Southbank%2C+Melbourne+Victoria+Australia)



https://ussportsdownunder.com/v3/wp-content/uploads/2015/12/WRB_superbowl_16_V2.jpg

- Doors open 7.30am, Broadcast from 10am
- Catch the game LIVE & LOUD over 2 big screens,
- \$25 Buckets of Budweiser + American grazing specials
- Half time give-aways and your chance to win a jersey, thanks to Budweiser
- Table reservations are available. Call us on 03 9690 6999 or email on info@worldrestaurantbar.com.au to book your spot in front of the big screen

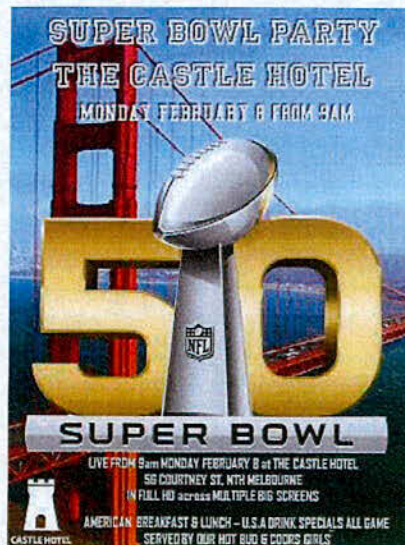
(03) 9690 6999

[Visit Website \(http://www.worldrestaurantbar.com.au/\)](http://www.worldrestaurantbar.com.au/)

The Castle Hotel

56 Courtney St
North Melbourne

[Map It \(http://maps.google.com/maps?q=56+COURTNEY+STREET+NORTH+MELBOURNE%2C+VICTORIA+3051+Australia\)](http://maps.google.com/maps?q=56+COURTNEY+STREET+NORTH+MELBOURNE%2C+VICTORIA+3051+Australia)



(<http://www.thecastlehotel.com.au>)

- Doors open 9am + no entry fee or booking required
- Catch all the action in HD live on 6 big screens
- Drinks & food served by our beautiful bud & coors girls
- \$25 Buckets of Budweiser & Coors
- American Breakfast and Lunch Specials all day

(03) 9348 9692

[Visit Website \(http://www.thecastlehotel.com.au\)](http://www.thecastlehotel.com.au)

Great Northern Hotel

644 Rathdowne Street

Carlton North

[Map It \(http://maps.google.com/maps?q=644+RATHDOWNE+ST+CARLTON+NORTH+Victoria+Australia\)](http://maps.google.com/maps?q=644+RATHDOWNE+ST+CARLTON+NORTH+Victoria+Australia)

- Doors open at 8am
- 10 HD screens and a projector all playing the game
- Great selection of local and American craft beer
- American food specials

(03) 9380 9569

[Visit Website \(http://gnh.net.au\)](http://gnh.net.au)

Ormond Hall at The Village

557 St Kilda Road

Melbourne

[Map It \(http://maps.google.com/maps?q=557+St+Kilda+Road+Melbourne+557+St+Kilda+Road%2C+Melbourne+Victoria+3004+Australia\)](http://maps.google.com/maps?q=557+St+Kilda+Road+Melbourne+557+St+Kilda+Road%2C+Melbourne+Victoria+3004+Australia)

- Doors open at 8am
- \$28 Bottle Beer Buckets
- American style food featuring 16 different wing flavours
- 1 mega screen + 3 large screens
- Tickets: General Admission \$12 or Seated with Breakfast burrito \$22

(03) 9533 9011

[Visit Website \(http://www.villagemelbourne.com.au\)](http://www.villagemelbourne.com.au)

The Leveson

46 Leveson St

North Melbourne

[Map It \(http://maps.google.com/maps?q=46+Leveson+street+NorthMelbourne+46+Leveson+Street+Northmelbourne%2C+Victoria+Melbourne+Australia\)](http://maps.google.com/maps?q=46+Leveson+street+NorthMelbourne+46+Leveson+Street+Northmelbourne%2C+Victoria+Melbourne+Australia)

- Doors open at 8am
- American beers and Food all day
- VIP Package/ Dining Package/ General Admission
- TVs, Screens and Audio
- Cheerleaders / Best dressed

(03) 9328 1109

[Visit Website \(http://www.theleveson.com\)](http://www.theleveson.com)

2016 Ultimate Aussie Super Bowl Party

Peninsula

Central Pier Shed 14, Docklands

[Map It \(http://maps.google.com/maps?q=Peninsula+Central+Pier+Shed+14%2C+Docklands+3008+Australia\)](http://maps.google.com/maps?q=Peninsula+Central+Pier+Shed+14%2C+Docklands+3008+Australia)

- Doors open 9am
- Numerous Packages available
- Prices start from \$145plus GST including food and beverages

(03) 9995 2659

[Visit Website \(https://crue.com.au/event_page/2016-ultimate-aussie-bow-part/\)](https://crue.com.au/event_page/2016-ultimate-aussie-bow-part/)

The St Kilda Branch

204 Barkly Street

Southbank

[Map It \(http://maps.google.com/maps?q=204+Barkly+Street+St+Kilda%2C+Victoria+3182+Australia\)](http://maps.google.com/maps?q=204+Barkly+Street+St+Kilda%2C+Victoria+3182+Australia)

- Doors open 10am
- Food available all day
- \$65 All Inclusive Package – Basic Spirits / House Wine & Bubbly / Dirty Granny Cider / Carlton Draught
- Live game on three big screens

(03) 9525 3054

[Visit Website \(http://www.thestkildabranch.com.au\)](http://www.thestkildabranch.com.au)

The Public Bar

238 Victoria Street

North Melbourne

[Map It \(http://maps.google.com/maps?q=238+Victoria+Street+North+Melbourne%2C+VIC+3051+Australia\)](http://maps.google.com/maps?q=238+Victoria+Street+North+Melbourne%2C+VIC+3051+Australia)

- Doors open from 8am and Free for everyone
- Watch live on massive projector screen
- Super Bowl food menu
- American beers on tap
- Outdoor seating area

(03) 9329 9888

[Visit Website \(http://www.thepublicbar.com.au\)](http://www.thepublicbar.com.au)

PJ O'Briens

Shop G12-16

Southgate Restaurant & Shopping Precinct

Southbank

[Map It \(http://maps.google.com/maps?q=Shop+G12-16%2C+Southgate+Restaurant+%26+Shopping+Precinct+Southbank%2C+Vic+Melbourne+3001+Australia\)](http://maps.google.com/maps?q=Shop+G12-16%2C+Southgate+Restaurant+%26+Shopping+Precinct+Southbank%2C+Vic+Melbourne+3001+Australia)

- Doors open 9am
- American Beers & Menu
- Live & Loud on big screen
- Bookings advised

(03) 9686 5011

[Visit Website \(http://www.pjobriens.com.au/southbank/\)](http://www.pjobriens.com.au/southbank/)

Turf Sports Bar

131 Queen St
Melbourne CBD

[Map It \(http://maps.google.com/maps?q=131+Queen+St+131+Queen+St%2C+Melbourne+CBD+Victoria+Australia\)](http://maps.google.com/maps?q=131+Queen+St+131+Queen+St%2C+Melbourne+CBD+Victoria+Australia)

- Doors Open at 9am
- American Styled Food Menu
- \$25 Bucket of Budweiser (4)
- Free cap with every bucket
- Outdoor seating area

(03) 9670 1271

[Visit Website \(http://www.turfbar.com.au\)](http://www.turfbar.com.au)

Precinct Hotel

60 Swan Street
Richmond

[Map It \(http://maps.google.com/maps?q=60+Swan+Street%2C+Richmond+VIC+Australia\)](http://maps.google.com/maps?q=60+Swan+Street%2C+Richmond+VIC+Australia)

- Doors Open at 8am
- Live across all our screens in the main bar and courtyard
- General admission & reserved seating tickets available
- Miller beer specials + American style food

(03) 9429 1633

[Visit Website \(http://www.precincthotel.com.au/events-at-precinct/80-super-bowl-50/event_details.html\)](http://www.precincthotel.com.au/events-at-precinct/80-super-bowl-50/event_details.html)

Shoppingtown Hotel

19 Williamsons Rd
Doncaster

[Map It \(http://maps.google.com/maps?q=19+Williamsons+Rd%2C+Doncaster+Victoria%2C+3108+Australia\)](http://maps.google.com/maps?q=19+Williamsons+Rd%2C+Doncaster+Victoria%2C+3108+Australia)

- Doors open 9am + Free Entry
- \$6 Bud's all day
- Brand new sports bar with 8 x 65" HD screens
- American food specials all day
- Table reservations available. Ph 03 98486811 or email shoppingtownhotel@alhgroup.com.au to book your spot

(03) 9848 6811

[Visit Website \(http://www.shoppingtownhotel.com.au/whats on\)](http://www.shoppingtownhotel.com.au/whats on)

The Fifth Province

3/60 Fitzroy St,
St Kilda

[Map It \(http://maps.google.com/maps?q=3%2F60+Fitzroy+St%2C+St+Kilda+Vic+3182+Australia\)](http://maps.google.com/maps?q=3%2F60+Fitzroy+St%2C+St+Kilda+Vic+3182+Australia)

- Doors open 8am
- Showing on 4 big screens
- Budweiser buckets \$25 Brooklyn lager buckets \$28 American food specials
- Band playing straight after the game to keep the party going
- Tickets \$20 includes breaky roll and a pot of beer. Tickets from camssuperbowlparty@gmail.com or at the venue.

0419 004 080

[Visit Website \(https://www.facebook.com/groups/191575161179728/\)](https://www.facebook.com/groups/191575161179728/)

Etihad Stadium

Medallion Sports Bar
Etihad Stadium
Docklands

[Map It \(http://maps.google.com/maps?q=Medallion+Sports+Bar%2C+Etihad+Stadium%2C+Docklands+Melbourne+740+Bourke+St%2C+Docklands+VIC+3008%2C+Melbourne+Victoria+Australia\)](http://maps.google.com/maps?q=Medallion+Sports+Bar%2C+Etihad+Stadium%2C+Docklands+Melbourne+740+Bourke+St%2C+Docklands+VIC+3008%2C+Melbourne+Victoria+Australia)

- Members of AmCham \$99.00 and Non-Members \$159.00 booking Via Website
- 2 drink cards, continuous finger food, Donuts & Coffee on arrival
- Excellent Business networking with over 80 companies represented
- Great way to develop US contacts and entertain Clients

(03) 9027 5632

[Visit Website \(http://www.amcham.com.au/\)](http://www.amcham.com.au/)

Hawthorn Hotel

481 Burwood Road
Hawthorn

[Map It \(http://maps.google.com/maps?q=481+Burwood+Road%2C+Hawthorn+VIC%2F3123+Australia\)](http://maps.google.com/maps?q=481+Burwood+Road%2C+Hawthorn+VIC%2F3123+Australia)

- Don't miss a minute of the action as we open from 8am, with kick-off at 10:30am.
- Enjoy \$20 Budweiser buckets, \$15 Budweiser & burger plus Super Bowl ribs and wings!
- For more information call 9810 0022

(03) 9810 0022

[Visit Website \(http://thehawthorn.com/\)](http://thehawthorn.com/)

Zagames Boronia

112 boronia rd
Boronia

[Map It \(http://maps.google.com/maps?q=Zagames+Boronia+112+boronia+rd%2C+Boronia+Victoria+Australia\)](http://maps.google.com/maps?q=Zagames+Boronia+112+boronia+rd%2C+Boronia+Victoria+Australia)

- Doors open at 8am w/free entry
- 2 projector screens showing all the action live & in HD
- Breakfast menu available til 11.30am
- \$5 Budweiser's all day
- Special Americanised menu available from 11.30am

(03) 9762 0883

[Visit Website \(http://www.zagames.com.au\)](http://www.zagames.com.au)

Skinny Dog Hotel

155 High Street
Kew

[Map It \(http://maps.google.com/maps?q=155+High+Street+Kew+155+High+Street+Kew%2C+Melbourne+Victoria+Australia\)](http://maps.google.com/maps?q=155+High+Street+Kew+155+High+Street+Kew%2C+Melbourne+Victoria+Australia)

- Doors open at 9am
- \$20 Coors buckets
- Showing on 11 big screens
- Amazing food specials
- Footballs and Guernseys to give away

(03) 9853 8023

[Visit Website \(http://www.skinnydoghotel.com.au\)](http://www.skinnydoghotel.com.au)

The Emerson



145 Commercial Road
South Yarra

[Map It \(http://maps.google.com/maps?q=The+Emerson+145+Commercial+Road%2C+South+Yarra+Victoria+Australia\)](http://maps.google.com/maps?q=The+Emerson+145+Commercial+Road%2C+South+Yarra+Victoria+Australia)

- Free Entry from 10am
- Food and Beverage Package \$150pp
- American Styled Menu
- Hosted by Leigh Colbert and special guests

[Visit Website \(http://www.theemerson.com.au\)](http://www.theemerson.com.au)

Prahran Hotel

82 High Street
Prahran

[Map It \(http://maps.google.com/maps?q=82+High+Street+Prahran%2C+Victoria+3181+Australia\)](http://maps.google.com/maps?q=82+High+Street+Prahran%2C+Victoria+3181+Australia)

- Doors open 10am
- State-side food and beverage specials
- Half time points margin sweepstake
- Prize for best dressed
- Live with sound on over 15 screens

(03) 9529 2168

[Visit Website \(http://www.prahranhotel.com/\)](http://www.prahranhotel.com/)

Rochester Hotel

202 Johnston Street
Fitzroy

[Map It \(http://maps.google.com/maps?q=202+Johnston+Street+Fitzroy%2C+VIC+3065+Australia\)](http://maps.google.com/maps?q=202+Johnston+Street+Fitzroy%2C+VIC+3065+Australia)

- Doors open 8am
- Buckets of PBR cans
- Food specials: hot wings, chilli cheese fries, hot dogs and more!
- Big Screens throughout venue and Jersey raffle
- Table bookings available: ea:drink@rochey.com.au

(03) 9419 0166

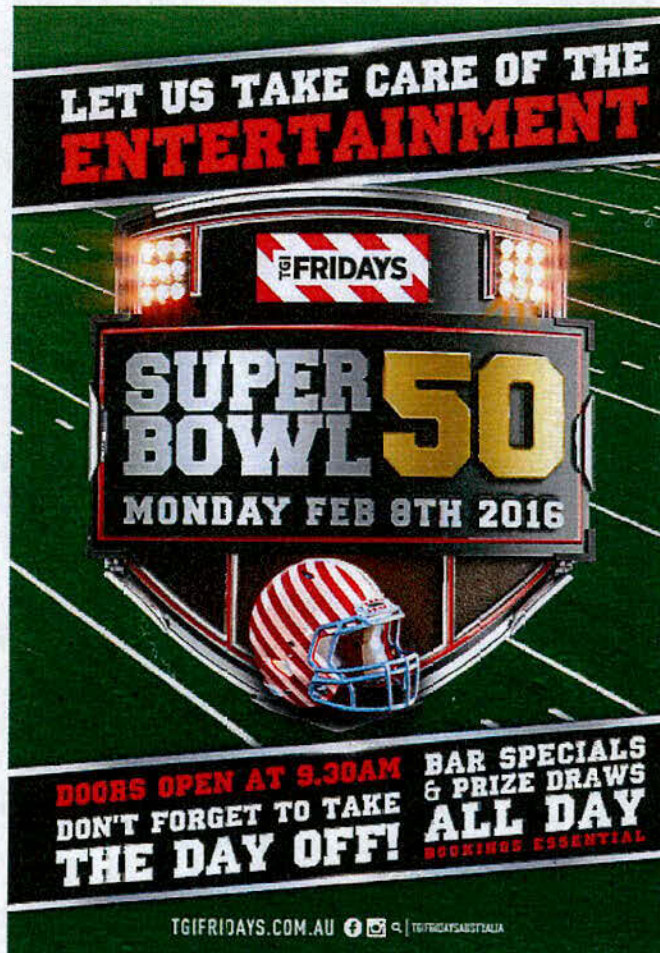
[Visit Website \(http://www.rochey.com.au\)](http://www.rochey.com.au)

NEW SOUTH WALES

VENUE
DESCRIPTION
CONTACT

TGI Fridays





<http://tgifridays.com.au>

Shop 454 Macquarie Shopping Centre
Herring Road
North Ryde

[Map It \(http://maps.google.com/maps?q=Shop+454+Macquarie+Shopping+Centre+Herring+Road%2C+North+Ryde+NSW+2113+Australia\)](http://maps.google.com/maps?q=Shop+454+Macquarie+Shopping+Centre+Herring+Road%2C+North+Ryde+NSW+2113+Australia)

(02) 9888 3440

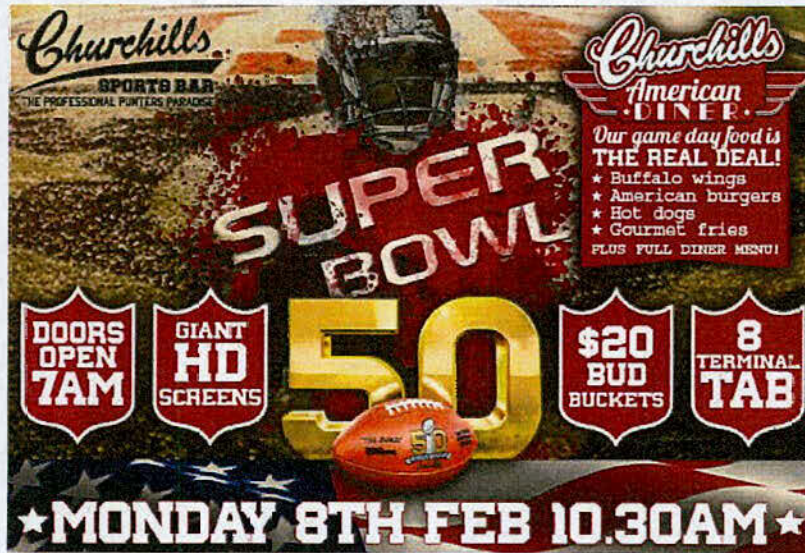
[Visit Website \(http://www.tgifridays.com.au/\)](http://www.tgifridays.com.au/)

- Doors open at 9.30am
- \$25 Coors Beer Buckets
- Jarryd Hayne jersey give-aways
- Door Prizes
- The Game live on every screen

FIND OUT MORE ([HTTP://WWW.TGIFRIDAYS.COM.AU/WP-CONTENT/THEMES/WPS-THEME/_/PDF/TGIF_SUPER_BOWL_MENU.PDF](http://www.tgifridays.com.au/wp-content/themes/wps-theme/_/pdf/tgif_super_bowl_menu.pdf))

Churchills Sports Bar





(<https://ussportsdownunder.com/v3/wp-content/uploads/2015/12/churchills-us-sports-superbowl.jpg>)

532 Anzac Parade,
Kingsford

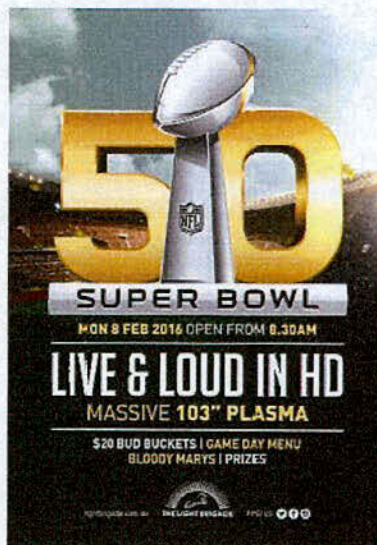
[Map It \(http://maps.google.com/maps?q=532+Anzac+Parade+Kingsford%2C+New+South+Wales+2032+Australia\)](http://maps.google.com/maps?q=532+Anzac+Parade+Kingsford%2C+New+South+Wales+2032+Australia)

(02) 9663 3648

[Visit Website \(http://www.churchillsbar.com.au\)](http://www.churchillsbar.com.au)

- Doors open 7am
- Watch the game LIVE on giant HD screens
- \$20 Bud buckets
- 8 Terminal TAB
- American game day food – The Real Deal!

The Light Brigade Hotel



(<https://ussportsdownunder.com/v3/wp-content/uploads/2015/12/LBH-Super-Bowl-Poster.jpg>)

2a Oxford St
Woollahra

[Map It \(http://maps.google.com/maps?q=2a+Oxford+St+Woollahra%2C+NSW+2025+Australia\)](http://maps.google.com/maps?q=2a+Oxford+St+Woollahra%2C+NSW+2025+Australia)

(02) 9357 0888

[Visit Website \(http://www.lightbrigade.com.au\)](http://www.lightbrigade.com.au)

- Doors Open 8.30am
- Live & Loud in HD on our massive 103" plasma and every screen in the venue
- \$20 Bud Buckets, Bloody Marys, Game Day Menu (Hotdogs, Wings & More)
- Great Prizes To Be Won
- Gold Standard Award Winning TAB & Betting Facilities on site

Shelbourne Hotel



<http://www.shelbournehotel.com.au/whats-on-2/superbowl-2016-in-sydney>

200 Sussex St
Sydney

[Map It \(http://maps.google.com/maps?q=200+Sussex+St+SYDNEY+NSW+Australia\)](http://maps.google.com/maps?q=200+Sussex+St+SYDNEY+NSW+Australia)

(02) 9267 3100

[Visit Website \(http://www.shelbournehotel.com.au/whats-on-2/superbowl-2016-in-sydney\)](http://www.shelbournehotel.com.au/whats-on-2/superbowl-2016-in-sydney)

- Doors Open 9am. Reservations Free & Recommended
- \$10 Buffalo Wings, \$5 Hot Dogs, \$25 Corona Buckets
- Indoor & Outdoor area
- 2 Projector Screens & multiple Plasma TVs
- \$29 Super Feast Menu for advanced bookings

Verandah Main Bar & BBQ

55-65 Elizabeth St
Sydney

[Map It \(http://maps.google.com/maps?q=55-65+Elizabeth+St+Sydney%2C+NSW+2000+Australia\)](http://maps.google.com/maps?q=55-65+Elizabeth+St+Sydney%2C+NSW+2000+Australia)



https://ussportsdownunder.com/v3/wp-content/uploads/2015/12/22634_SuperBowl2016_proof3.jpg

- Doors open 8.30am
- \$20 Miller Buckets & Miller Promo Girls
- \$12 Hotdogs & \$15 Buffalo Wings 1/2 KG
- Great Prizes to be Won Including a \$200 Rebel Sports Voucher
- Table Bookings Available, call 02 9239 5888

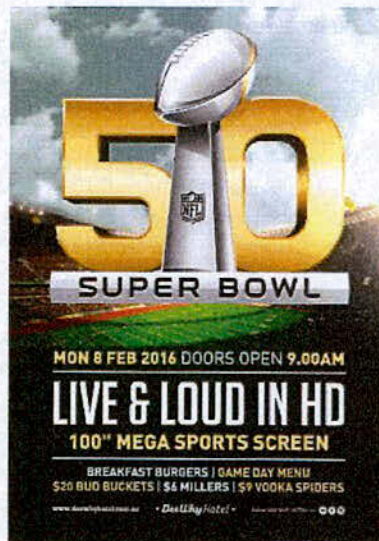
(02) 9239 5888

[Visit Website \(http://www.verandah.com.au/page/main_bar_bbq.html\)](http://www.verandah.com.au/page/main_bar_bbq.html)

Dee Why Hotel

834 Pittwater Rd
Dee Why

[Map It \(http://maps.google.com/maps?q=834+Pittwater+Rd+Dee+Why%2C+NSW+2099+Australia\)](http://maps.google.com/maps?q=834+Pittwater+Rd+Dee+Why%2C+NSW+2099+Australia)



<https://ussportsdownunder.com/v3/wp-content/uploads/2015/12/Dee-Why-Hotel-Super-Bowl-Artwork.jpg>

- Doors open 9am
- Live & Loud in HD on 100" Mega Sports Screen & throughout the venue
- Breakfast Burgers & Game Day Menu (Wings, Hotdogs & More)

- \$20 Bud Buckets, \$6 Miller Schooners, \$9 Vodka Spiders

(02) 9982 1797

[Visit Website \(http://www.deewhyhotel.com.au/\)](http://www.deewhyhotel.com.au/)

King St Brewhouse

22 The Promenade

King St Wharf

[Map It \(http://maps.google.com/maps?q=22+The+Promenade%2C+King+St+Wharf+NSW+Sydney+Australia\)](http://maps.google.com/maps?q=22+The+Promenade%2C+King+St+Wharf+NSW+Sydney+Australia)

- \$20 reserved seating includes 2 bottles of Miller, a hot dog.
- Lucky door prizes, 2 NFL Jerseys for reserved seats.
- 2 Projectors, 12 large TV's, with sound.
- Home of the Sydney NFL supporters and Sydney Uni Lions.
- Walk ins welcome, with priority seating for reservation.

(02) 8270 7901

[Visit Website \(http://kingstbrewhouse.com.au/\)](http://kingstbrewhouse.com.au/)

Pymont Bridge Hotel

96 Union St

Pymont

[Map It \(http://maps.google.com/maps?q=96+Union+St%2C+Pymont%2C+2009+96+Union+St%2C+Pymont%2C+2009%2C+Sydney+NSW+Australia\)](http://maps.google.com/maps?q=96+Union+St%2C+Pymont%2C+2009+96+Union+St%2C+Pymont%2C+2009%2C+Sydney+NSW+Australia)

- Doors open 8am: Bookings welcome!
- 15 Big screens – Live & Load across 3 levels
- \$5 Buds & \$5 American Pale Ale Schooners
- \$5 PBH Big Dogs
- \$5 Wings

(02) 9660 6996

[Visit Website \(http://www.pymontbridgehotel.com\)](http://www.pymontbridgehotel.com)

Tea Gardens Hotel Bondi

2-4 Bronte Road

Bondi Junction

[Map It \(http://maps.google.com/maps?q=2-4+Bronte+Road+Bondi+Junction%2C+New+South+Wales+2022+Australia\)](http://maps.google.com/maps?q=2-4+Bronte+Road+Bondi+Junction%2C+New+South+Wales+2022+Australia)

- Doors open from 7am
- USA style Bar Snacks Available
- USA Beer Specials
- LIVE n Loud coverage on 20 screens

(02) 9389 3288

[Visit Website \(http://www.teagardenshotel.com.au/\)](http://www.teagardenshotel.com.au/)

York 75 Sports Bar Hotel CBD

75 York Street

Sydney

[Map It \(http://maps.google.com/maps?q=75+York+Street+Sydney%2C+NSW+2000+Australia\)](http://maps.google.com/maps?q=75+York+Street+Sydney%2C+NSW+2000+Australia)

- Doors open 10am



- \$99 – \$159 pp
- 4hr Drinks Package (incl Budweiser) & Canapes
- In-house sports betting
- 20 Screens within the Bar including private booths

(02) 8031 9000

[Visit Website \(http://www.amcham.com.au/vpLink.aspx?ID=4200&EVENT=00000003102&STATE=NSW\)](http://www.amcham.com.au/vpLink.aspx?ID=4200&EVENT=00000003102&STATE=NSW)

CocknBull Hotel

89 Ebley Street
Bondi Junction

[Map It \(http://maps.google.com/maps?q=89+Ebley+Street+Bondi+Junction%2C+NSW+2022+Australia\)](http://maps.google.com/maps?q=89+Ebley+Street+Bondi+Junction%2C+NSW+2022+Australia)

- Doors open 8am
- Biggest screen in Bondi Junction
- USA Beer Specials All Day
- Wings & Beer buckets all day

(02) 9389 3004

[Visit Website \(http://cockn-bull.com.au/\)](http://cockn-bull.com.au/)

Northies Cronulla Hotel

Crn Kingsway & Elouera Rd
Cronulla

[Map It \(http://maps.google.com/maps?q=Crn+Kingsway+%26amp%3B+Elouera+Rd+Cronulla%2C+NSW+2230+Australia\)](http://maps.google.com/maps?q=Crn+Kingsway+%26amp%3B+Elouera+Rd+Cronulla%2C+NSW+2230+Australia)

- Newly renovated Sports Bar
- All-American Beer & Food Specials
- Biggest TV in Cronulla
- Giveaways

(02) 9523 6866

[Visit Website \(http://www.northswell-cronulla.com/https://northies-hotelsquarespace.com/config/2016/1/6/super-bowl-2016-at-northies\)](http://www.northswell-cronulla.com/https://northies-hotelsquarespace.com/config/2016/1/6/super-bowl-2016-at-northies)

Engadine Bowling Club

61 Cambrai Ave
Engadine

[Map It \(http://maps.google.com/maps?q=61+Cambrai+Ave+Engadine%2C+NSW+2233+Australia\)](http://maps.google.com/maps?q=61+Cambrai+Ave+Engadine%2C+NSW+2233+Australia)

- Doors Open 9am
- Live & Loud on 2 Massive Full HD Screens
- American Game Day Food
- American Beer Specials| Coors | Miller | Blue Moon | Sam Adams
- Giveaways

(02) 9548 2022

[Visit Website \(http://www.engadinebowling.com.au/\)](http://www.engadinebowling.com.au/)

Rag & Famish Hotel

199 Miller St
North Sydney

[Map It \(http://maps.google.com/maps?q=199+Miller+St+North+Sydney%2C+NSW+2060+Australia\)](http://maps.google.com/maps?q=199+Miller+St+North+Sydney%2C+NSW+2060+Australia)

- Doors Open 9.30am



- Food available 10am
- Bucket of Coors \$20
- American menu available
- Giveaways throughout the day

(02) 9955 1257

[Visit Website \(http://www.ragandfamish.com.au\)](http://www.ragandfamish.com.au)

Woolpack Hotel Parramatta

19 George Street
Parramatta

[Map It \(http://maps.google.com/maps?q=19+George+Street%2C+Parramatta+NSW++2150+Australia\)](http://maps.google.com/maps?q=19+George+Street%2C+Parramatta+NSW++2150+Australia)

- Doors open 7:30am
- Live n Loud coverage on the HD Screens
- \$10 Redds Apple Ale & Wing Deal
- TAB Facilities
- Door Prizes

(02) 9635 8043

[Visit Website \(http://woolpackhotel.com.au/\)](http://woolpackhotel.com.au/)

Royal Hotel Sutherland

45 East Parade,
Sutherland

[Map It \(http://maps.google.com/maps?q=45+East+Parade%2C+Sutherland+2232+Australia\)](http://maps.google.com/maps?q=45+East+Parade%2C+Sutherland+2232+Australia)

- Doors Open 10am
- Live n Loud Coverage throughout the hotel
- TAB Facilities
- USA Meal Special @ Mike's Grill

(02) 9521 7774

[Visit Website \(http://royalhotelsutherland.com.au/\)](http://royalhotelsutherland.com.au/)

Dove & Olive

156 Devonshire Street
Sydney

[Map It \(http://maps.google.com/maps?q=156+Devonshire+Street+Sydney%2C+New+South+Wales+2010+Australia\)](http://maps.google.com/maps?q=156+Devonshire+Street+Sydney%2C+New+South+Wales+2010+Australia)

- Open from 10am
- Live on our large screens
- US beer & American style beers
- Sierra Nevada Pale Ale on tap
- American Inspired Food Specials

(02) 9699 6001

[Visit Website \(http://doveandolive.com.au/\)](http://doveandolive.com.au/)

Keg & Brew

26 Foveaux Street
Surry Hills

[Map It \(http://maps.google.com/maps?q=26+Foveaux+Street+Surry+Hills%2C+Sydney%2C+New+South+Wales+2010+Australia\)](http://maps.google.com/maps?q=26+Foveaux+Street+Surry+Hills%2C+Sydney%2C+New+South+Wales+2010+Australia)

- Open from 10am
- Live on our large screens
- US beer & American style beers
- Sierra Nevada Pale Ale on tap
- American Inspired Food Specials

(02) 9212 1740

[Visit Website \(http://www.kegandbrew.com.au/\)](http://www.kegandbrew.com.au/)

The DOG Hotel

2 St. Marks Road
Randwick

[Map It \(http://maps.google.com/maps?q=2+St.+Marks+Road+Randwick%2C+New+South+Wales+2031+Australia\)](http://maps.google.com/maps?q=2+St.+Marks+Road+Randwick%2C+New+South+Wales+2031+Australia)

- Open from 10am
- Live on our large screens
- US beer & American style beers
- Sierra Nevada Pale Ale on tap
- American Inspired Food Specials

(02) 9398 2682

[Visit Website \(http://www.doghotel.com.au/\)](http://www.doghotel.com.au/)

The Woollahra Hotel

116 Queen Street
Woollahra

[Map It \(http://maps.google.com/maps?q=116+Queen+Street%2C+Woollahra+116+Queen+Street%2C+Woollahra%2C+Woollahra+NSW+Australia\)](http://maps.google.com/maps?q=116+Queen+Street%2C+Woollahra+116+Queen+Street%2C+Woollahra%2C+Woollahra+NSW+Australia)

- Doors open at 9.30am
- \$20 Coors buckets
- Game Day Food, sliders, hot dogs, spicy wings and chili cheese fries.
- TAB facilities available
- Large bookings please call 02 9327 9777

(02) 9327 9777

[Visit Website \(http://www.woollahrahotel.com.au\)](http://www.woollahrahotel.com.au)

The Office Hotel

Cnr of Kent and Erskine Street
Wynyard

[Map It \(http://maps.google.com/maps?q=Cnr+of+Kent+and+Erskine+Street%2C+Wynyard+Cnr+of+Kent+and+Erskine+Street%2C+Wynyard%2C+Sydney+NSW+Australia\)](http://maps.google.com/maps?q=Cnr+of+Kent+and+Erskine+Street%2C+Wynyard+Cnr+of+Kent+and+Erskine+Street%2C+Wynyard%2C+Sydney+NSW+Australia)

- Doors open 8am
- USA Beer specials all day
- American Style food menu
- Prizes for Jersey wearers on the day
- TAB facilities/Large Sports wall (8+ TV's)

(02) 9279 3133

[Visit Website \(http://www.theofficehotel.com.au\)](http://www.theofficehotel.com.au)

The Chippendale Hotel

87-91 Abercrombie Street
Chippendale

[Map It \(http://maps.google.com/maps?q=87%E2%80%9391+Abercrombie+Street%2C+Chippendale+87%E2%80%9391+Abercrombie+Street%2C+Chippendale%2C+Sydney+NSW+Australia\)](http://maps.google.com/maps?q=87%E2%80%9391+Abercrombie+Street%2C+Chippendale+87%E2%80%9391+Abercrombie+Street%2C+Chippendale%2C+Sydney+NSW+Australia)

- Doors open 10am
- Game On Massive Screen
- FOR \$60
 - Cheekyburger's Famous Cheeseburger & Fries
 - Buffalo Wings
 - All you can drink beer

(02) 9310 5133

[Visit Website \(http://www.thechippendalehotel.com.au\)](http://www.thechippendalehotel.com.au)

Bridge St Garage

17-19 Bridge Street
Sydney

[Map It \(http://maps.google.com/maps?q=17-19+Bridge+Street+Sydney%2C+New+South+Wales+2000+Australia\)](http://maps.google.com/maps?q=17-19+Bridge+Street+Sydney%2C+New+South+Wales+2000+Australia)

- Bookings from 10:30am
- 5 TVs and a huge 100" Screen
- American 4 course Stadium Menu (\$50pp), including our BBQ pork ribs!
- 2 Full Bars including American beers and local craft beers
- Prizes and Give-a-ways!

(02) 9241 9392

[Visit Website \(http://bridgestgarage.com.au/super-bowl-50-do-it-like-the-americans-do/\)](http://bridgestgarage.com.au/super-bowl-50-do-it-like-the-americans-do/)

The Burwood Inn

77 Berner Street
Merewether

[Map It \(http://maps.google.com/maps?q=77+Berner+Street+Merewether+NSW+2291+77+Berner+Street%2C+Merewether+NSW+Australia\)](http://maps.google.com/maps?q=77+Berner+Street+Merewether+NSW+2291+77+Berner+Street%2C+Merewether+NSW+Australia)

- Doors open 9am
- Live and loud through venue
- TAB facilities for live betting
- US beer
- US themed food

(02) 4963 5000

[Visit Website \(http://theburwood.com.au/\)](http://theburwood.com.au/)

ACT

VENUE
DESCRIPTION
CONTACT

King O'Malley's

131 City Walk
Canberra City

[Map It \(http://maps.google.com/maps?q=131+City+Walk+Canberra+City%2C+Australian+Capital+Territory+2600+Australia+target=\)](http://maps.google.com/maps?q=131+City+Walk+Canberra+City%2C+Australian+Capital+Territory+2600+Australia+target=)

- Doors open at 8am
- Game shown on our big screen with sound
- USA beer specials all day
- Special USA food

(02) 62570111

[Visit Website \(http://www.kingomalleys.com.au\)](http://www.kingomalleys.com.au)

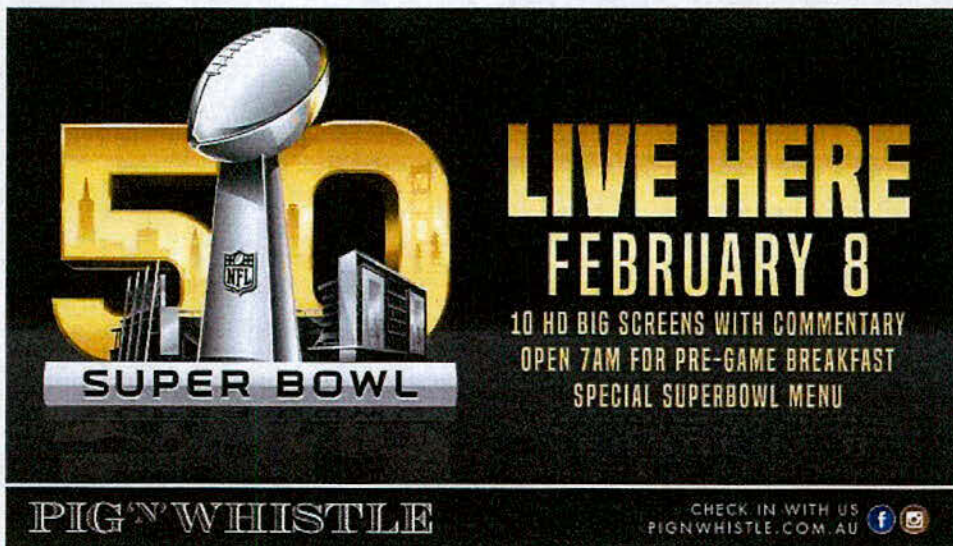
QUEENSLAND

VENUE

DESCRIPTION

CONTACT

Pig 'N' Whistle Riverside



<https://ussportsdownunder.com/v3/wp-content/uploads/2015/12/PRS-2129-Superbowl-01-16-NL.jpg>

123 Eagle Street

Brisbane

[Map It \(http://maps.google.com/maps?q=Riverside+Centre+123+Eagle+Street%2C+Brisbane+QLD+Australia\)](http://maps.google.com/maps?q=Riverside+Centre+123+Eagle+Street%2C+Brisbane+QLD+Australia)

(07) 3832 9099

[Visit Website \(http://www.pignwhistle.com.au/riverside/\)](http://www.pignwhistle.com.au/riverside/)

- Doors open at 7am and 9.30am kick off
- Multiple HD big screens and projectors with audio.
- Mention this post and receive a special 'Super Bowl Offer'.

BOOK TICKETS ([HTTP://WWW.PIGNWHISTLE.COM.AU/RIVERSIDE/HOME/SPORTS-BAR-BRISBANE/AMERICAN-FOOTBALL/](http://www.pignwhistle.com.au/riverside/home/sports-bar-brisbane/american-football/))

The Grosvenor On George

320 George Street
Brisbane

[Map It \(http://maps.google.com/maps?q=320+George+Street+Brisbane+Queensland+4003+Australia\)](http://maps.google.com/maps?q=320+George+Street+Brisbane+Queensland+4003+Australia)

- Topless Barmaids & Waitresses & Exotic Dancers
- Cheap American Style Pub Meals
- Budweiser & Corona Buckets
- Large Screens & Projector with Surround Sound
- Table Dances & Showgirl Performance at Full Time

0415815731

[Visit Website \(http://www.thegrosvenorongeeorge.com.au\)](http://www.thegrosvenorongeeorge.com.au)

Melbas

46 Cavill Avenue
surfers paradise

[Map It \(http://maps.google.com/maps?q=46+Cavill+Avenue+surfers+paradise%2C+qld+Gold+Coast+Australia\)](http://maps.google.com/maps?q=46+Cavill+Avenue+surfers+paradise%2C+qld+Gold+Coast+Australia)

- Doors open at 8am
- Wings & Bucket Deals
- \$20 Big Brekkie Available from 8am
- Live on the biggest LED TV Screen on the Coast
- +40 plasmas around Gold Coast's longest bar

(07) 5538 7411

[Visit Website \(http://www.melbas.com.au/\)](http://www.melbas.com.au/)

Pineapple Hotel

706 Main Street
Kangaroo Point

[Map It \(http://maps.google.com/maps?q=706+Main+Street+Kangaroo+Point%2C+Brisbane+Queensland+Australia\)](http://maps.google.com/maps?q=706+Main+Street+Kangaroo+Point%2C+Brisbane+Queensland+Australia)

- Venue open from 9am
- Sadly the boss has not yet confirmed beer specials and food.
- We will have a \$10 lunch menu from 11.30am – 3pm (they may bring that out earlier)

(07) 3393 1111

[Visit Website \(http://www.pineapplehotel.com.au\)](http://www.pineapplehotel.com.au)

Hotella

68 Petrie Tce
Brisbane

[Map It \(http://maps.google.com/maps?q=68+Petrie+Tce+Brisbane%2C+Australia%2C+Qld+4000+Australia\)](http://maps.google.com/maps?q=68+Petrie+Tce+Brisbane%2C+Australia%2C+Qld+4000+Australia)

- Doors open at 8am
- ESPN Live and Loud throughout the venue
- American style food and beer specials on the day
- Win a NFL jersey of your choice on the day

(07) 3368 2560

[Visit Website \(http://www.hotella.com.au\)](http://www.hotella.com.au)

Surfers Paradise Tavern and Beergarden

Cnr Cavill and Orchid Ave
Surfers Paradise

[Map It \(http://maps.google.com/maps?q=Cnr+Cavill+and+Orchid+Ave+Cnr+Cavill+and+Orchid+Ave%2C+Surfers+Paradise%2C+Gold+Coast+QLD%2C+4217+Australia\)](http://maps.google.com/maps?q=Cnr+Cavill+and+Orchid+Ave+Cnr+Cavill+and+Orchid+Ave%2C+Surfers+Paradise%2C+Gold+Coast+QLD%2C+4217+Australia)

- Free entry from 9am
- Free breakfast
- \$10 jugs of Carlton Dry all day
- Budweiser available
- Wear a jersey, receive a free gift

(07) 5570 1322

[Visit Website \(http://www.surfersbeergarden.com.au/\)](http://www.surfersbeergarden.com.au/)

Elephant Hotel

230 Wickham Street
Fortitude Valley

[Map It \(http://maps.google.com/maps?q=230+Wickham+Street+Fortitude+Valley%2C+Queensland+4006+Australia\)](http://maps.google.com/maps?q=230+Wickham+Street+Fortitude+Valley%2C+Queensland+4006+Australia)

- Open from 9am
- Live on our big screen projector
- \$12 wings and american hot dogs
- Drink specials

(07) 3252 4136

[Visit Website \(http://elephanthotel.com.au\)](http://elephanthotel.com.au)

Morrison Hotel

640 Stanlet St
Brisbane

[Map It \(http://maps.google.com/maps?q=640+Stanlet+STreet+Brisbane%2C+QLD+4102+Australia\)](http://maps.google.com/maps?q=640+Stanlet+STreet+Brisbane%2C+QLD+4102+Australia)

- Doors open at 9.30am
- Beer and food available from 10am
- As much Coffee and Juice from 9.30am
- Awesome U.S. inspired snacks
- Plenty of fun giveaways.

(07) 3391 1413

[Visit Website \(http://www.morrisonhotel.com.au\)](http://www.morrisonhotel.com.au)

Murrumba Downs Tavern

cnr dohles rocks & ogg roads
Murrumba Downs

[Map It \(http://maps.google.com/maps?q=cnr+dohles+rocks+and+ogg+roads+murrumba+downs+as+above%2C+brisbane+qld+4503+Australia\)](http://maps.google.com/maps?q=cnr+dohles+rocks+and+ogg+roads+murrumba+downs+as+above%2C+brisbane+qld+4503+Australia)

- Doors open at 9am
- Budwiser specials
- American style snacks
- Give aways

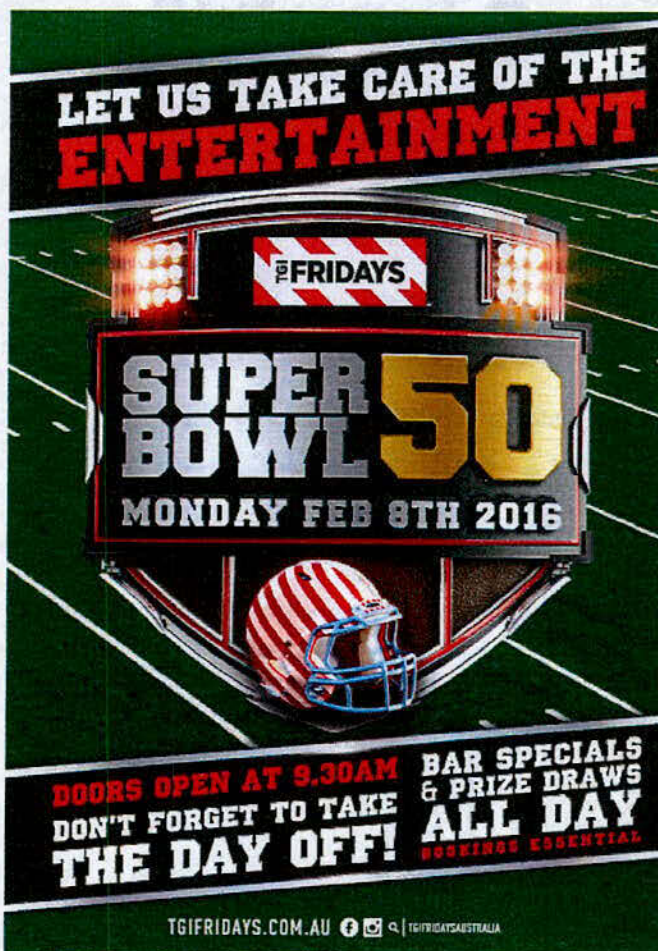
(07) 3482 4077

[Visit Website \(http://www.mdtavern.com.au\)](http://www.mdtavern.com.au)

SOUTH AUSTRALIA

VENUE
DESCRIPTION
CONTACT

TGI Fridays



<http://tgifridays.com.au>

Shop 2051A
297 Diagonal Road
Oaklands Park

Map It (<http://maps.google.com/maps?q=Shop+2051A+297+Diagonal+Road%2C+Oaklands+Park+SA+5046+Australia>)

(08) 8296 5777

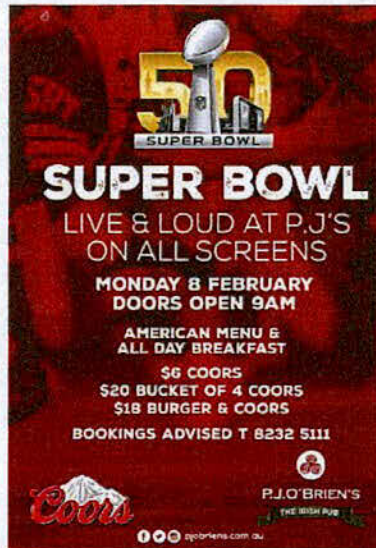
Visit Website (<http://www.tgifridays.com.au/>)

- Doors open at 9.30am
- \$25 Coors Beer Buckets
- Jarryd Hayne jersey give-aways
- Door Prizes
- See the game live on every screen



FIND OUT MORE ([HTTP://WWW.TGIFRIDAYS.COM.AU/WP-CONTENT/THEMES/WPS-THEME/_/PDF/TGIF_SUPER_BOWL_MENU.PDF](http://www.tgifridays.com.au/wp-content/themes/wps-theme/_/pdf/tgif_super_bowl_menu.pdf))

P.J. O'Brien's Irish Pub



(<https://ussportsdownunder.com/v3/wp-content/uploads/2015/12/PJ-Adl-Superbowl-2016.jpg>)

14 East Terrace
Adelaide

[Map It \(http://maps.google.com/maps?q=14+East+Terrace+Adelaide%2C+South+Australia+5000+Australia\)](http://maps.google.com/maps?q=14+East+Terrace+Adelaide%2C+South+Australia+5000+Australia)

(08) 8232 5111

[Visit Website \(http://www.pjobriens.com.au/adelaide/\)](http://www.pjobriens.com.au/adelaide/)

- Doors open at 9am
- LIVE & LOUD on all screens
- American style food menu all day
- Coors bucket special
- Beer & burger special

Sportys Bar + Arena
Arkaba Hotel

150 Glen Osmond Road
Fullarton

[Map It \(http://maps.google.com/maps?q=150+Glen+Osmond+Road+Fullarton%2C+SA+5031+Australia\)](http://maps.google.com/maps?q=150+Glen+Osmond+Road+Fullarton%2C+SA+5031+Australia)





(https://ussportsdownunder.com/v3/wp-content/uploads/2015/12/Superbowl_A4.jpg)

- Doors open from 8am
- HUGE outdoor screen
- Free Budweiser with every breakfast 8am-10am
- Bucket of 4 Budweisers \$20 all day
- Visit from the Budweiser Girls

(08) 8338 1100

[Visit Website \(http://www.arkabahotel.com.au/sportys\)](http://www.arkabahotel.com.au/sportys)

Marion Hotel

849 Marion Rd
Mitchell Park

[Map It \(http://maps.google.com/maps?q=849+Marion+Rd+Mitchell+Park%2C+SA+5043+Australia\)](http://maps.google.com/maps?q=849+Marion+Rd+Mitchell+Park%2C+SA+5043+Australia)

- Doors open at 8am
- Bucket of 4 Budweisers \$20 all day
- Win Budweiser hats
- Heaps of screens inside and outside

(08) 8276 8888

[Visit Website \(http://www.marionhotel.com.au/\)](http://www.marionhotel.com.au/)

Findon Hotel

261 Grange Road
Findon

[Map It \(http://maps.google.com/maps?q=261+Grange+Road+Findon%2C+South+Australia+5023+Australia\)](http://maps.google.com/maps?q=261+Grange+Road+Findon%2C+South+Australia+5023+Australia)

- Doors open at 9am
- TAB facilities
- Buffalo Wings & Hot Dogs available from 10am
- Buckets of 4 Budweisers \$25
- Imperial Pints of Coors \$7

(08) 8445 7000

[Visit Website \(http://www.findonhotel.com.au/\)](http://www.findonhotel.com.au/)

Golden Fleece Hotel



77 Murray Street
Gawler

[Map It \(http://maps.google.com/maps?q=77+Murray+Street%2C+Gawler%2C+5118+Australia\)](http://maps.google.com/maps?q=77+Murray+Street%2C+Gawler%2C+5118+Australia)

- Live on the big screen from 10am
- Kitchen open from 9am
- 1kg wings- \$15 | burger, fries & pint deal - \$20 | Carlton Dry pint - \$6

(08) 8522 1043

[Visit Website \(http://goldenfleecegawler.com.au/\)](http://goldenfleecegawler.com.au/)

Exeter Hotel Semaphore

152 Semaphore Rd
Exeter

[Map It \(http://maps.google.com/maps?q=152+Semaphore+Rd+Exeter+South+Australia+Australia\)](http://maps.google.com/maps?q=152+Semaphore+Rd+Exeter+South+Australia+Australia)

- Doors open 8am
- \$6 Pints of Coors Draught
- Buffalo Wings & Ribs from 10am
- Live & Loud on the big screen!!

(08) 8449 6716

[Visit Website \(http://www.exeterhotel.com.au/\)](http://www.exeterhotel.com.au/)

Torrens Arms Hotel

95 Belair Road
Kingswood

[Map It \(http://maps.google.com/maps?q=95+Belair+Road+Kingswood%2C+SA+5062+Australia\)](http://maps.google.com/maps?q=95+Belair+Road+Kingswood%2C+SA+5062+Australia)

- Doors open 9am
- HUGE screen in the outdoor Courtyard
- Hot wings \$10 per kilo!
- Bucket of 4 Budweisers \$20 all day
- Win Budweiser hats

(08) 8272 8522

[Visit Website \(http://www.tahotel.com.au/\)](http://www.tahotel.com.au/)

Tonsley Hotel

1274 South Road
Clovelly Park

[Map It \(http://maps.google.com/maps?q=1274+South+Road+Clovelly+Park%2C+SA+5042+Australia\)](http://maps.google.com/maps?q=1274+South+Road+Clovelly+Park%2C+SA+5042+Australia)

- Doors open 9am
- HUGE outdoor screen
- Bacon & Egg Burger and American Style Hotdog specials
- Bucket of 4 Budweisers \$20 all day
- Win Budweiser hats

(08) 82768 099

[Visit Website \(http://www.tonsleyhotel.com.au/\)](http://www.tonsleyhotel.com.au/)

Kent Town Hotel

76 Rundle St
Kent Town

[Map It \(http://maps.google.com/maps?q=76+RUNDLE+STREET+KENT+TOWN%2C+South+Australia+5067+Australia\)](http://maps.google.com/maps?q=76+RUNDLE+STREET+KENT+TOWN%2C+South+Australia+5067+Australia)

- Doors open 9am for breakfast
- Live Coverage On The Big Screen
- \$9.90 All American Menu
- \$6 Coors / \$20 Bucket Of Four

(08) 8362 2116

[Visit Website \(http://www.kenttownhotel.com.au\)](http://www.kenttownhotel.com.au)

Robin Hood Hotel

315 Portrush Road
Norwood

[Map It \(http://maps.google.com/maps?q=315+Portrush+Road%2C+Norwood+5067+Australia\)](http://maps.google.com/maps?q=315+Portrush+Road%2C+Norwood+5067+Australia)

- Doors open 9am
- 1KG American Wings \$12
- \$15 Coopers Pale, Melbourne Bitter & Bulmers Cider Jugs

(08) 8333 0088

[Visit Website \(http://www.robinhoodhotel.net.au/\)](http://www.robinhoodhotel.net.au/)

WESTERN AUSTRALIA

VENUE	DESCRIPTION	CONTACT
-------	-------------	---------

The Mustang Bar

46 Lake Street
Northbridge

[Map It \(http://maps.google.com/maps?q=46+Lake+Street+Northbridge+WA+Australia\)](http://maps.google.com/maps?q=46+Lake+Street+Northbridge+WA+Australia)

- Doors open from 7am
- Bagel Breakfast including Juice/Coffee for \$7
- Budweiser Specials

(08) 9328 2350

[Visit Website \(http://mustangbar.com.au/\)](http://mustangbar.com.au/)

Inglewood Hotel

803 Beaufort Street
Mt Lawley

[Map It \(http://maps.google.com/maps?q=803+Beaufort+Street+Mt+Lawley%2C+Perth+WA+Australia\)](http://maps.google.com/maps?q=803+Beaufort+Street+Mt+Lawley%2C+Perth+WA+Australia)

- 3m big screen & HD TV's Inc. surround sound
- Doors (and bar/kitchen) open from 6am
- American breakfast/lunch specials & USA beers
- Giveaways & Competitions on the day - Win genuine NFL shirts
- Plenty of free car parking



(08) 9370 5511
[Visit Website \(http://www.inglewoodhotel.com.au\)](http://www.inglewoodhotel.com.au)

The Duke Bar & Bistro

2 Innesvale Way
Carramar

[Map It \(http://maps.google.com/maps?q=2+Innesvale+Way+CARRAMAR+WESTERN+AUSTRALIA+Australia\)](http://maps.google.com/maps?q=2+Innesvale+Way+CARRAMAR+WESTERN+AUSTRALIA+Australia)

- Doors open 7.30am
- Dude Food Specials
- Budweiser on Tap
- Buy a Budweiser Bucket, get a FREE Bud cap

[Visit Website \(http://www.thedukeperth.com.au\)](http://www.thedukeperth.com.au)

NORTHERN TERRITORY

VENUE
DESCRIPTION
CONTACT

TASMANIA

VENUE
DESCRIPTION
CONTACT

GET YOUR VENUE/ EVENT LISTED

If you know of an event or run a venue that should be in this listing then please contact us below (venues added in the comments will not be added to the listing and will be deleted).

ADD YOUR VENUE/ EVENT ([HTTPS://USSPORTSDOWNUNDER.COM/CONTACT/LIST-SUPER-BOWL-VENUEEVENT/](https://USSPORTSDOWNUNDER.COM/CONTACT/LIST-SUPER-BOWL-VENUEEVENT/))

SHOP OFFICIAL SUPER BOWL GEAR FROM OUR AUSTRALIAN STORE

SALE! ussportsdownunder.com/store/super-bowl-50-new-era-nfl-core-shore-primary-adjustable-9twenty-curve-cap-hat/
<https://ussportsdownunder.com/store/super-bowl-50-new-era-nfl-core-shore-primary-adjustable-9twenty-curve-cap-hat/>



[\(https://ussportsdownunder.com/store/super-bowl-50-new-era-nfl-core-shore-primary-adjustable-9twenty-curve-cap-hat/\)](https://ussportsdownunder.com/store/super-bowl-50-new-era-nfl-core-shore-primary-adjustable-9twenty-curve-cap-hat/)

ARIZONA CARDINALS ([HTTPS://USSPORTSDOWNUNDER.COM/STORE/CATEGORY/NFL/ARIZONA-CARDINALS/](https://ussportsdownunder.com/store/category/nfl/arizona-cardinals/))

Super Bowl 50 New Era NFL Core Shore Primary Adjustable 9TWENTY Curve Cap Hat

[\(https://ussportsdownunder.com/store/super-bowl-50-new-era-nfl-core-shore-primary-adjustable-9twenty-curve-cap-hat/\)](https://ussportsdownunder.com/store/super-bowl-50-new-era-nfl-core-shore-primary-adjustable-9twenty-curve-cap-hat/)

\$34.95 AUD

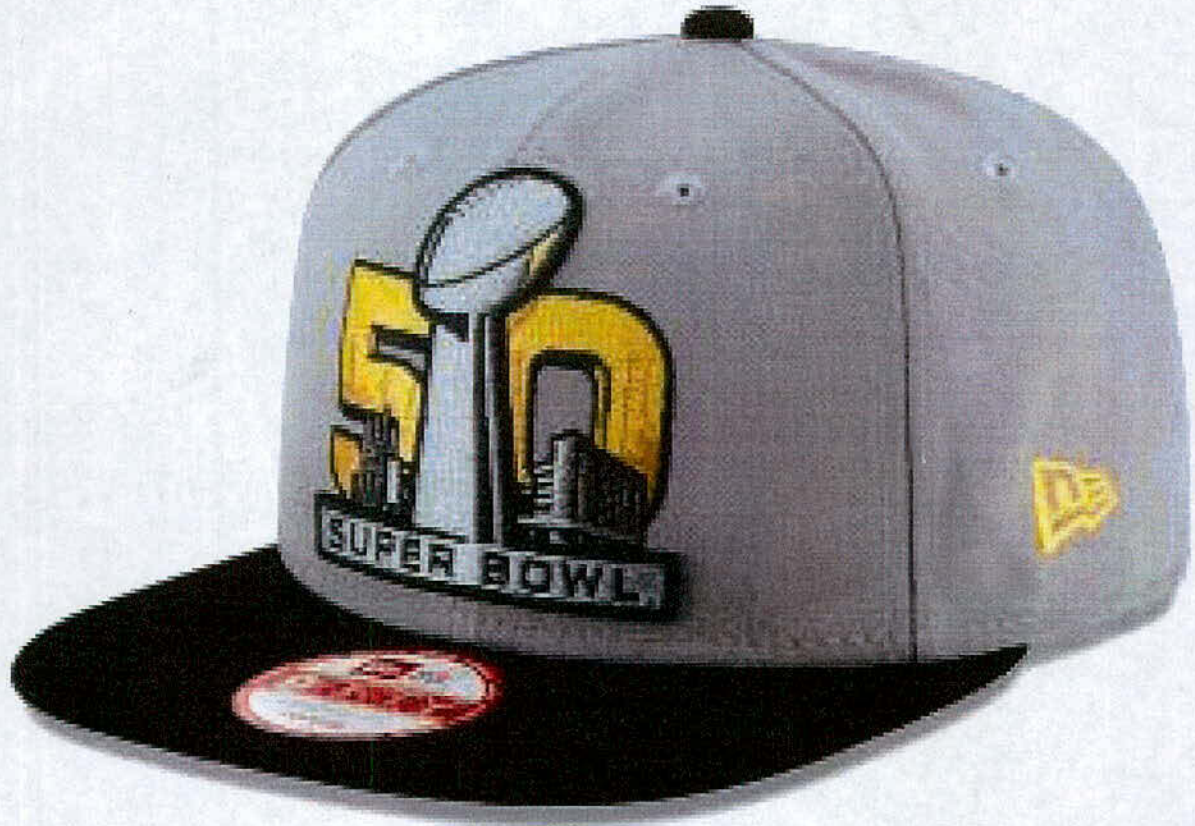
\$24.95 AUD

[ADD TO CART \(/BEST-PLACES-IN-AUSTRALIA-TO-WATCH-SUPER-BOWL-50-IN-2016/?ADD-TO-CART=89002\)](#)

[\(https://ussportsdownunder.com/store/super-bowl-50-new-era-nfl-logo-grand-original-fit-9fifty-snapback-cap-hat-greyblack/\)](https://ussportsdownunder.com/store/super-bowl-50-new-era-nfl-logo-grand-original-fit-9fifty-snapback-cap-hat-greyblack/)

[\(https://ussportsdownunder.com/store/super-bowl-50-new-era-nfl-logo-grand-original-fit-9fifty-snapback-cap-hat-greyblack/\)](https://ussportsdownunder.com/store/super-bowl-50-new-era-nfl-logo-grand-original-fit-9fifty-snapback-cap-hat-greyblack/)





[\(https://ussportsdownunder.com/store/super-bowl-50-new-era-nfl-logo-grand-original-fit-9fifty-snapback-cap-hat-greylblack/\)](https://ussportsdownunder.com/store/super-bowl-50-new-era-nfl-logo-grand-original-fit-9fifty-snapback-cap-hat-greylblack/)
ARIZONA CARDINALS ([HTTPS://USSPORTSDOWNUNDER.COM/STORE/CATEGORY/NFL/ARIZONA-CARDINALS/](https://ussportsdownunder.com/store/category/nfl/arizona-cardinals/))

Super Bowl 50 New Era NFL Logo Grand Original Fit 9FIFTY Snapback Cap Hat - Grey/Black

[\(https://ussportsdownunder.com/store/super-bowl-50-new-era-nfl-logo-grand-original-fit-9fifty-snapback-cap-hat-greylblack/\)](https://ussportsdownunder.com/store/super-bowl-50-new-era-nfl-logo-grand-original-fit-9fifty-snapback-cap-hat-greylblack/)
\$49.95 AUD

[ADD TO CART](#)
</BEST-PLACES-IN-AUSTRALIA-TO-WATCH-SUPER-BOWL-50-IN-2016/?ADD-TO-CART-88977>

[\(https://ussportsdownunder.com/store/super-bowl-50-new-era-nfl-the-league-heather-adjustable-9forty-curve-cap-hat/\)](https://ussportsdownunder.com/store/super-bowl-50-new-era-nfl-the-league-heather-adjustable-9forty-curve-cap-hat/)
[\(https://ussportsdownunder.com/store/super-bowl-50-new-era-nfl-the-league-heather-adjustable-9forty-curve-cap-hat/\)](https://ussportsdownunder.com/store/super-bowl-50-new-era-nfl-the-league-heather-adjustable-9forty-curve-cap-hat/)





[\(https://ussportsdownunder.com/store/super-bowl-50-new-era-nfl-the-league-heather-adjustable-9forty-curve-cap-hat/\)](https://ussportsdownunder.com/store/super-bowl-50-new-era-nfl-the-league-heather-adjustable-9forty-curve-cap-hat/)
ARIZONA CARDINALS (HTTPS://USSPORTSDOWNUNDER.COM/STORE/CATEGORY/NFL/ARIZONA-CARDINALS/)

Super Bowl 50 New Era NFL The League Heather Adjustable 9FORTY Curve Cap Hat

[\(https://ussportsdownunder.com/store/super-bowl-50-new-era-nfl-the-league-heather-adjustable-9forty-curve-cap-hat/\)](https://ussportsdownunder.com/store/super-bowl-50-new-era-nfl-the-league-heather-adjustable-9forty-curve-cap-hat/)
\$39.95 AUD

ADD TO CART
</BEST-PLACES-IN-AUSTRALIA-TO-WATCH-SUPER-BOWL-50-IN-2016/?ADD-TO-CART-88994>

SALE! ussportsdownunder.com/store/super-bowl-50-wilson-duke-official-full-size-nfl-american-football-game-ball/
[\(https://ussportsdownunder.com/store/super-bowl-50-wilson-duke-official-full-size-nfl-american-football-game-ball/\)](https://ussportsdownunder.com/store/super-bowl-50-wilson-duke-official-full-size-nfl-american-football-game-ball/)

FREE SHIPPING*





(<https://ussportsdownunder.com/store/super-bowl-50-wilson-duke-official-full-size-nfl-american-football-game-ball/>)
ARIZONA CARDINALS ([HTTPS://USSPORTSDOWNUNDER.COM/STORE/CATEGORY/NFL/ARIZONA-CARDINALS/](https://ussportsdownunder.com/store/category/nfl/arizona-cardinals/))

Super Bowl 50 Wilson Duke Official Full Size NFL American Football Game Ball

(<https://ussportsdownunder.com/store/super-bowl-50-wilson-duke-official-full-size-nfl-american-football-game-ball/>)

\$199.95 AUD


\$174.95 AUD


ADD TO CART
(</BEST-PLACES-IN-AUSTRALIA-TO-WATCH-SUPER-BOWL-50-IN-2016/?ADD-TO-CART=89307>)


VISIT NFL STORE ([HTTPS://USSPORTSDOWNUNDER.COM/STORE/CATEGORY/NFL](https://ussportsdownunder.com/store/category/nfl))



895
SHARES

 Facebook (<http://www.facebook.com/sharer.php?u=https%3A%2F%2Fussportsdownunder.com%2Fbest-places-in-australia-to-watch-super-bowl-50-in-2016%2F>)




 Twitter (<https://twitter.com/intent/tweet?text=Best%20Places%20In%20Australia%20To%20Watch%20Super%20Bowl%2050%20In%202016&via=ussportsdwnundr&url=https%3A%2F%2Fussportsdownunder.com%2Fbest-places-in-australia-to-watch-super-bowl-50-in-2016%2F>)

 Subscribe



BY ANDY ([HTTPS://USSPORTSDOWNUNDER.COM/AUTHOR/ANDYATHOMAS](https://ussportsdownunder.com/author/andyathomas))

Founder of US Sports Down Under. Big Dallas Cowboys, Dallas Mavericks & Texas Rangers fan.

   (<http://instagram.com/andyathomas>)

LEAVE A REPLY

Your email address will not be published. Required fields are marked

Comment

Name

Email

Website

SHOP BY BRAND



https://ussportsdownunder.com/pa_brand/mitchell-ness



https://ussportsdownunder.com/pa_brand/new-era



https://ussportsdownunder.com/pa_brand/nfl-team-apparel



https://ussportsdownunder.com/pa_brand/majestic



https://ussportsdownunder.com/pa_brand/wilson



https://ussportsdcwnunder.com/pa_brand/stance



https://ussportsdownunder.com/pa_brand/mcfarlane

LATEST BLOG UPDATES





[\(https://ussportsdownunder.com/best-venues-watch-us-sports-australia/\)](https://ussportsdownunder.com/best-venues-watch-us-sports-australia/)

BEST VENUES TO WATCH US SPORTS IN AUSTRALIA

[\(https://ussportsdownunder.com/best-venues-watch-us-sports-australia/\)](https://ussportsdownunder.com/best-venues-watch-us-sports-australia/)



[\(https://ussportsdownunder.com/australian-nfl-tv-guide/\)](https://ussportsdownunder.com/australian-nfl-tv-guide/)

AUSTRALIAN NFL TV GUIDE & GAME PASS FAQ

[\(https://ussportsdownunder.com/australian-nfl-tv-guide/\)](https://ussportsdownunder.com/australian-nfl-tv-guide/)



[\(https://ussportsdownunder.com/best-places-in-australia-to-watch-super-bowl-50-in-2016/\)](https://ussportsdownunder.com/best-places-in-australia-to-watch-super-bowl-50-in-2016/)


BEST PLACES IN AUSTRALIA TO WATCH SUPER BOWL 50 IN 2016

[\(https://ussportsdownunder.com/best-places-in-australia-to-watch-super-bowl-50-in-2016/\)](https://ussportsdownunder.com/best-places-in-australia-to-watch-super-bowl-50-in-2016/)

[\(https://ussportsdownunder.com/american-college-football-game-confirmed-for-sydney-in-2016/\)](https://ussportsdownunder.com/american-college-football-game-confirmed-for-sydney-in-2016/)

AMERICAN COLLEGE FOOTBALL GAME CONFIRMED FOR SYDNEY IN 2016

[\(https://ussportsdownunder.com/american-college-football-game-confirmed-for-sydney-in-2016/\)](https://ussportsdownunder.com/american-college-football-game-confirmed-for-sydney-in-2016/)

 JOIN OUR MAILING LIST

2016/01/27 09:13:11

SUBSCRIBE



FOLLOW US



Welcome to US Sports Down Under - the #1 destination for NFL, NBA, MLB, NHL & NCAA fans in Australia & New Zealand for official merchandise & updates.

[FIND OUT MORE \(HTTPS://USSPORTSDOWNUNDER.COM/ABOUT/\)](https://ussportsdownunder.com/about/)

SHOP

- [NFL STORE \(HTTPS://USSPORTSDOWNUNDER.COM/STORE/CATEGORY/NFL/\)](https://ussportsdownunder.com/store/category/nfl/)
- [NBA STORE \(HTTPS://USSPORTSDOWNUNDER.COM/STORE/CATEGORY/NBA/\)](https://ussportsdownunder.com/store/category/nba/)
- [NHL STORE \(HTTPS://USSPORTSDOWNUNDER.COM/STORE/CATEGORY/NHL/\)](https://ussportsdownunder.com/store/category/nhl/)
- [MLB STORE \(HTTPS://USSPORTSDOWNUNDER.COM/STORE/CATEGORY/MLB/\)](https://ussportsdownunder.com/store/category/mlb/)
- [NCAA STORE \(HTTPS://USSPORTSDOWNUNDER.COM/STORE/CATEGORY/NCAA/\)](https://ussportsdownunder.com/store/category/ncaa/)

BLOG

- [NFL BLOG \(HTTPS://USSPORTSDOWNUNDER.COM/CATEGORY/BLOG/NFL/\)](https://ussportsdownunder.com/category/blog/nfl/)
- [NBA BLOG \(HTTPS://USSPORTSDOWNUNDER.COM/CATEGORY/BLOG/NBA/\)](https://ussportsdownunder.com/category/blog/nba/)
- [NHL BLOG \(HTTPS://USSPORTSDOWNUNDER.COM/CATEGORY/BLOG/NHL/\)](https://ussportsdownunder.com/category/blog/nhl/)
- [MLB BLOG \(HTTPS://USSPORTSDOWNUNDER.COM/CATEGORY/BLOG/MLB/\)](https://ussportsdownunder.com/category/blog/mlb/)
- [NCAA BLOG \(HTTPS://USSPORTSDOWNUNDER.COM/CATEGORY/BLOG/NCAA/\)](https://ussportsdownunder.com/category/blog/ncaa/)

ACCOUNT

- [REGISTER \(HTTPS://USSPORTSDOWNUNDER.COM/MY-ACCOUNT/\)](https://ussportsdownunder.com/my-account/)
- [LOGIN \(HTTPS://USSPORTSDOWNUNDER.COM/MY-ACCOUNT/\)](https://ussportsdownunder.com/my-account/)
- [YOUR ORDERS \(HTTPS://USSPORTSDOWNUNDER.COM/MY-ACCOUNT/\)](https://ussportsdownunder.com/my-account/)
- [WISHLIST \(HTTPS://USSPORTSDOWNUNDER.COM/MY-ACCOUNT/MY-LISTS/\)](https://ussportsdownunder.com/my-account/my-lists/)
- [YOUR CART \(HTTPS://USSPORTSDOWNUNDER.COM/CART/\)](https://ussportsdownunder.com/cart/)
- [MAILING LIST \(HTTP://EEPURL.COM/QOYU1\)](http://eepurl.com/QOYU1)
- [LOG OUT \(HTTPS://USSPORTSDOWNUNDER.COM/V3/WP-LOGIN.PHP?ACTION=LOGOUT&REDIRECT_TO=HTTP%3A%2F%2FUSSPORTSDOWNUNDER.COM%2F&WPNONCE=6660826214&REDIRECT_TO=HTTP%3A%2F%2FUSSPORTSDOWNUNDER.COM%2F\)](https://ussportsdownunder.com/v3/wp-login.php?action=log-out&redirect_to=http%3A%2F%2Fussportsdownunder.com%2F&wpnonce=6660826214&redirect_to=http%3A%2F%2Fussportsdownunder.com%2F)

INFO

- [ABOUT \(HTTPS://USSPORTSDOWNUNDER.COM/ABOUT/\)](https://ussportsdownunder.com/about/)
- [PRIVACY POLICY \(HTTPS://USSPORTSDOWNUNDER.COM/ABOUT/PRIVACY-POLICY/\)](https://ussportsdownunder.com/about/privacy-policy/)
- [TERMS & CONDITIONS \(HTTPS://USSPORTSDOWNUNDER.COM/TERMS-CONDITIONS/\)](https://ussportsdownunder.com/terms-conditions/)
- [FAQ \(HTTPS://USSPORTSDOWNUNDER.COM/FAQ/\)](https://ussportsdownunder.com/faq/)

[SHIPPING \(HTTPS://USSPORTSDOWNUNDER.COM/SHIPPING/\)](https://ussportsdownunder.com/shipping/)

[RETURNS/EXCHANGES \(HTTPS://USSPORTSDOWNUNDER.COM/MY-ACCOUNT/REFUNDS-EXCHANGES/\)](https://ussportsdownunder.com/my-account/refunds-exchanges/)

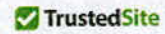
[CONTACT \(HTTPS://USSPORTSDOWNUNDER.COM/CONTACT\)](https://ussportsdownunder.com/contact/)

* FREE EXPRESS POSTAGE ONLY AVAILABLE FOR ORDERS WITHIN AUSTRALIA

WE ACCEPT THE FOLLOWING FORMS OF PAYMENT:



[/HTTPS://WWW.MCAFFEESECURE.COM/VERIFY?HOST=USSPORTSDOWNUNDER.COM/](https://www.mcafee.com/verify?host=ussportsdownunder.com)



[\(HTTPS://WWW.TRUSTEDSITE.COM/SITE/USSPORTSDOWNUNDER.COM/\)](https://www.trustedsite.com/site/ussportsdownunder.com/)

ALL CONTENT COPYRIGHT © 2015 US SPORTS DOWN UNDER UNLESS STATED OTHERWISE
ALL RIGHTS RESERVED US SPORTS DOWN UNDER PTY LTD ABN: 46160020299



- (3) For subsection (2)(g), a regulation may prescribe a practice or promotion for all licensees or permittees, or for a particular class of licensees or permittees.
- (4) The commissioner may make a guideline under section 42A that includes examples of practices and promotions mentioned in subsection (2).

142ZZA Responsible practices and promotions

- (1) A licensee or permittee must, in the conduct of business on the relevant premises, engage in practices and promotions that encourage the responsible consumption of liquor—

- (a) generally; and

Examples—

- having non-alcoholic and low alcohol beverages available
- supplying liquor in standardised quantities that can be recognised by patrons
- serving patrons half-measures of spirits on request

- (b) prescribed by regulation for this section.

Maximum penalty—100 penalty units.

- (2) For subsection (1)(b), a regulation may prescribe a practice or promotion for all licensees or permittees, or for a particular class of licensees or permittees.
- (3) The commissioner may make a guideline under section 42A that includes examples of practices and promotions that encourage the responsible consumption of liquor.

142ZZB Providing a safe environment and preserving amenity

- (1) A licensee or permittee must, in the conduct of business on the relevant premises, provide and maintain a safe environment in and around the relevant premises.

Maximum penalty—100 penalty units.

- (2) A licensee or permittee must, in the conduct of business on the relevant premises, take all reasonable steps to ensure the use

of the premises does not adversely affect the amenity of the area in which the premises are located.

Maximum penalty—100 penalty units.

- (3) A licensee or permittee must, in the conduct of business on the relevant premises, take all reasonable steps to ensure the behaviour of persons entering or leaving the premises does not adversely affect the amenity of the area in which the premises are located.

Maximum penalty—100 penalty units.

- (4) If a licensee or permittee knows or has reason to believe that a relevant offence is being, or is about to be, committed in or around the relevant premises, the licensee or permittee must take reasonable steps to stop or prevent the commission of the offence.

Maximum penalty—100 penalty units.

- (5) For subsection (4), an offence is a *relevant offence* if the commission of the offence may reasonably be expected to have an adverse impact on—

- (a) the health and safety of a person in or around the relevant premises; or
- (b) the amenity of the area in which the premises are located.

- (6) A licensee or permittee must, in the conduct of business on the relevant premises, engage in the positive practices prescribed by regulation for this section.

Maximum penalty—100 penalty units.

- (7) A licensee or permittee must not, in the conduct of business on the relevant premises, engage in, or allow another person to engage in, an unacceptable practice prescribed by regulation for this section.

Maximum penalty—100 penalty units.

- (8) A regulation may prescribe a practice to be a positive practice for subsection (6) or an unacceptable practice for subsection (7) for the purposes of—

- (a) providing and maintaining a safe environment in and around licensed premises and premises to which permits relate; and
- (b) ensuring the use of the premises does not adversely affect the amenity of the areas in which they are located.

142ZZC Advertising

- (1) A licensee or permittee must not advertise or allow anyone to advertise—
 - (a) the availability of the following for consumption on the relevant premises—
 - (i) free liquor;
 - (ii) multiple quantities of liquor; or

Example—

2 drinks for the price of 1

- (b) the sale price of liquor for consumption on the relevant premises; or
- (c) a promotion that is likely to indicate to an ordinary person the availability of liquor, for consumption on the relevant premises, at a price less than that normally charged for the liquor.

Examples of promotions for paragraph (c)—

- 'happy hours'
- 'all you can drink'
- 'toss the boss'

Maximum penalty—100 penalty units.

- (2) A person does not contravene subsection (1) if—
 - (a) the advertising happens only within the relevant premises; and
 - (b) the advertisement is not visible or audible to a person who is outside the relevant premises.

Guideline 12: Advertising packages including a meal or accommodation and alcoholic beverages

While there is a general prohibition on the external promotion of the price of liquor for on-premises consumption, it is acknowledged that the advertisement of 'drink and meal' packages have become an accepted practice for many licensees. In order to assist licensees and to limit potential abuse of these types of promotions this document is designed to provide guidance on the limits of such promotions.

This guideline, however, does not authorise a licensee to breach any provision of the *Liquor Act 1992*.

Liquor Act 1992 - Section 142ZZC

This section controls certain advertising by licensees or permittees.

Section 142ZZC (1)(a) to (c) prohibit a licensee or permittee from advertising, or allowing anyone to advertise:

(a) the availability of the following for consumption on the licensee's licensed premises or the premises to which the permittee's permit relates (each the advertised premises)

- free liquor
- multiple quantities of liquor; for example - 2 drinks for the price of 1.

(b) the sale price of liquor for consumption on the advertised premises; or

(c) a promotion that is likely to indicate to an ordinary person the availability of liquor, for consumption on the advertised premises, at a price less than that normally charged for the liquor. Examples of promotions for (c) include:

- 'happy hours'
- 'all you can drink'
- 'toss the boss'.

In accordance with s142ZZC(2), a person does not contravene s142ZZC(1) if:

(a) the advertising happens only within the advertised premises; and

(b) the advertisement is not visible or audible to a person who is outside the advertised premises.



What is acceptable?

It is considered acceptable to advertise the price and availability of a package consisting of:

(a) a meal and 1 alcoholic beverage, provided the beverage equates to no more than 1.5 standard drinks and the meal is of sufficient substance to ordinarily be accepted as a meal; or

(b) a package consisting of a meal for 2 and a bottle of wine, sparkling wine or champagne up to 750mL, and the meals are

(I) of sufficient substance to ordinarily be accepted as a meal; and

(II) eaten in an area of the premises ordinarily set aside for dining.

(c) a package consisting of accommodation and a bottle of wine, sparkling wine or champagne up to 750mL.

In these circumstances it is considered the alcoholic beverage is ancillary to the meal/s or accommodation and in normal circumstances would not be captured by the provisions of section 142ZZC of the Liquor Act.

By way of example, in normal circumstances, advertising the price of a package comprising a steak and stubby of beer or glass of wine would be considered acceptable. Similarly a package consisting of 2 meals and a 750mL bottle of champagne would also be acceptable.

What is a meal?


A meal needs to be prepared and should form part of a menu and be eaten by a person sitting at a table, or fixed structure used as a table, with cutlery provided for the purposes of eating the food. The service of food should be of sufficient substance that it would ordinarily be accepted as a meal.

What is a standard drink?

Please refer to the [standard drinks page](#), which outlines the ratio of a standard drink of an adult alcoholic beverage.

What is unacceptable?

It is considered unacceptable to advertise the price or availability of a package consisting of more than 1 beverage or a beverage equating to more than 1.5 standard drinks with a single meal as part of the package.



Example

Advertising the price of a steak and 2 schooners of beer is not considered acceptable.

It is also unacceptable if a promotion is likely to indicate to an ordinary person the availability of liquor at a price less than that normally charged.

Example

4 tacos and 4 bottles of Corona for \$14.

Exclusions

This guideline does not generally limit promotions associated with:

- (a) bona fide 'functions' as defined in the Liquor Act; or
- (b) promotions relating to Melbourne Cup day.

Issued 3 April 2012



Pesci's Clubnight

3 hrs · 🌐

No Clubnight is complete without tantalising drink specials! Be sure to get in before 10pm for the best prices going around 😊

8 Likes

- 👍 Like
- 💬 Comment
- ➦ Share