

## ATTACHMENT

### DRUGS/POISONS DETECTED IN BLOOD BY FULL SCREENING

The drugs shown below would normally be detectable at therapeutic or higher concentrations unless otherwise indicated. The drugs detected include, but are not limited to those shown below.  
For any drug not on the list, please contact the laboratory regarding our testing capability.

<b>Amphetamines / Stimulants**</b>	Amphetamine, methylamphetamine, pseudoephedrine, ephedrine, 3,4-Methylenedioxyamphetamine (MDA), 3,4-Methylenedioxyethylamphetamine (MDEA), 3,4-Methylenedioxymethylamphetamine (MDMA), paramethoxyamphetamine (PMA), phentermine.
<b>Benzodiazepines</b>	Alprazolam, bromazepam, clobazam, clonazepam / 7-aminoclonazepam, diazepam / nordiazepam, flunitrazepam / 7-aminoflunitrazepam, flurazepam / desalkylflurazepam, hydroxy alprazolam, lorazepam, midazolam, nitrazepam / 7-aminonitrazepam, oxazepam, temazepam, triazolam.
<b>Anti-Depressants</b>	Amitriptyline / nortriptyline, citalopram, clomipramine, dothiepin, doxepin, fluoxetine, fluvoxamine, imipramine / desipramine, mianserin, mirtazapine, moclobemide, nefazadone, paroxetine*, sertraline, trimipramine, venlafaxine.
<b>Opiates** / Narcotic analgestics</b>	Morphine, codeine, dextromethorphan, dextromoramide, methadone, oxycodone*, pentazocine, pethidine, pholcodine, propoxyphene, tramadol.
<b>Anti-Psychotics/ Tranquillisers</b>	Amisulpride*, chlorpromazine, clozapine, fluphenazine, haloperidol*, methaqualone, olanzapine, pericyazine, prochlorperazine, promazine, quetiapine, thioridazine, trifluoperazine*, zolpidem.
<b>Anti-Histamines</b>	Brompheniramine, chlorpheniramine, diphenhydramine, pheniramine, promethazine.
<b>Anti-Convulsants / Barbiturates</b>	Amylobarb, carbamazepine, lamotrigine, levetiracetam, methylphenobarbitone, oxcarbazepine, pentobarb, phenobarb, phenytoin, primidone, quinalbarb, thiopentone.
<b>Analgesics</b>	Diclofenac, paracetamol, salicylic acid (aspirin)
<b>Anti-Diabetics</b>	Chlorpropamide, gliclazide, tolbutamide.
<b>Anti-Inflammatory</b>	Diflunisal, ibuprofen, ketoprofen, meloxicam, naproxen, piroxicam.
<b>Miscellaneous</b>	Acetone, acetazolamide, amantadine, atracurium, atropine, benzotropine, bupivacaine, bupropion, caffeine, cannabinoids, cisapride, chloroquine, cotinine, cyproheptadine, diltiazem, dipyridamole, disopramide, doxylamine, ethanol, flecainide, fluconazole, frusemide, hydroxychloroquin, irbesartan, ketamine, lignocaine, methanol, metoclopramide, metoprolol*, metronidazole, mexiletine, nicotine, omeprazole, orphenadrine, pantoprazole, perhexiline, propranolol, quinine, quinidine, rabeprazole, risperidone*, strychnine, sulphamethoxazole, telmisartan, theophylline, tranlycypamine, trimethoprim, verapamil, warfarin.

\* Detectable at toxic or higher concentrations

\*\* Cocaine/cocaine metabolite and 6 mono acetyl morphine can be detected by urine immunoassay.

#### Legend to screening methods

GC/NPD: Gas chromatograph with nitrogen phosphorus detection.

GC/MS: Gas chromatograph with mass spectral detection.

HPLC: High performance liquid chromatography with diode array detection.

LC/MS: High performance liquid chromatography with tandem mass spectral detection.

#### NATA Accredited Laboratory 41

The results relate solely to the item(s) and/or sample(s) as received.

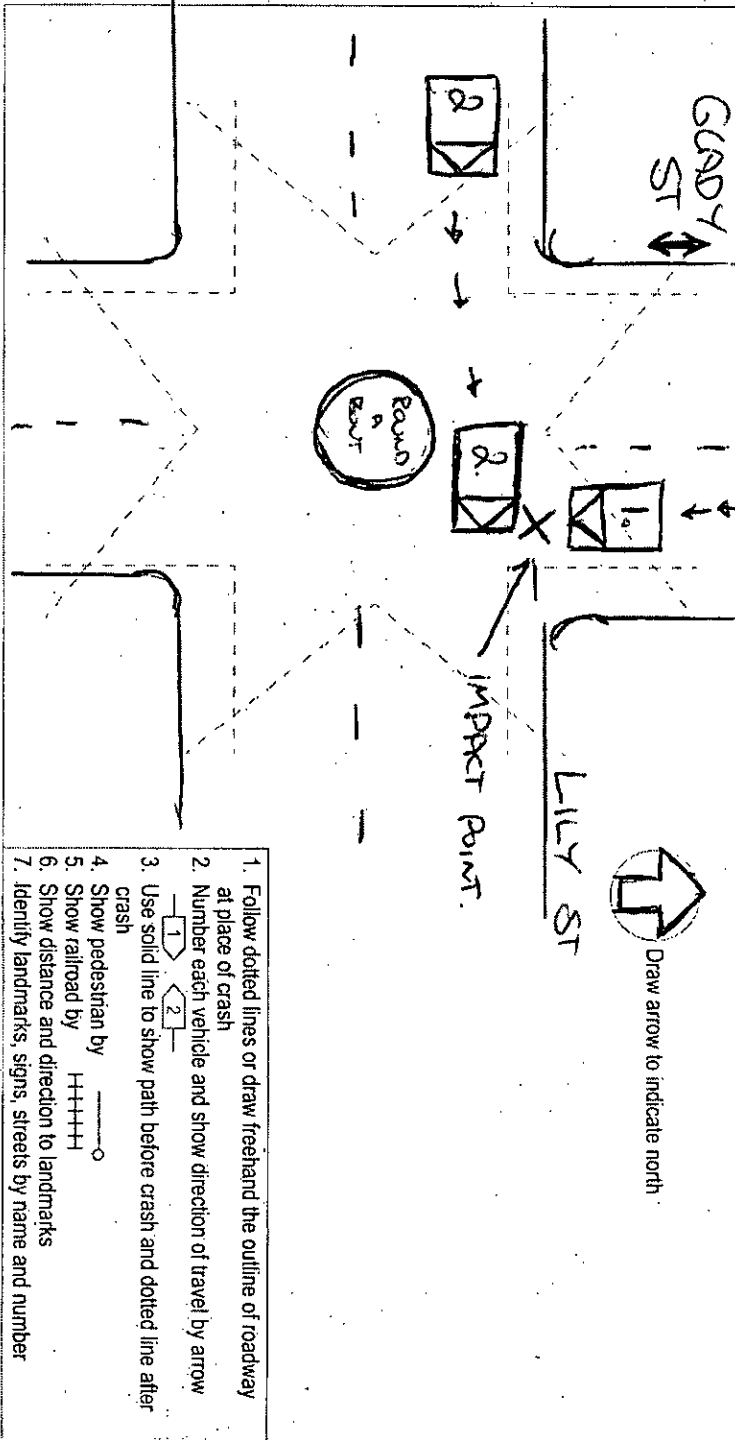
39 Kessels Road  
Coopers Plains QLD 4108  
AUSTRALIA

PO Box 594  
Archerfield QLD 4108  
AUSTRALIA

Phone (+61 7) 3274 9000  
Fax (+61 7) 3000 9628  
Email FSS@health.qld.gov.au

**CRASH DESCRIPTION**

Indicate on diagram what happened—Diagram below is to be scanned into QPRIME



1. Follow dotted lines or draw freehand the outline of roadway at place of crash
2. Number each vehicle and show direction of travel by arrow
3. Use solid line to show path before crash and dotted line after crash
4. Show pedestrian by
5. Show railroad by
6. Show distance and direction to landmarks
7. Identify landmarks, signs, streets by name and number

- 6. The Form 3 Doctor's Notice to Coroner after Autopsy and Form 30 Autopsy Certificate stating that were later delivered to the Northern Coroner, Cairns.

Peter John THOMAS  
 Sergeant 10829  
 Townsville Inquiries Office

OATHS ACT 1867 (DECLARATION)

I Peter John THOMAS do solemnly and sincerely declare that:

- (1) This written statement by me dated 07/01/2013 and contained in pages numbered 1 to 2 is true to the best of my knowledge and belief; and
- (2) I make this statement knowing that if it were admitted as evidence, I may be liable to prosecution for stating in it anything I know to be false.

and I make this solemn declaration conscientiously believing the same to be true and virtue of the provisions of the Oaths Act 1867

.....Signature

Taken and declared before me at Townsville

This 7th day of January 2013

Witness

*[Handwritten Signature]*  
 Justice of the Peace (Qualified)  
 Justice of the Peace / *[Handwritten Name]*  
 Commissioner of Declarations  
 Other (Please State) .....

(Witness's signature)

(Justice of the Peace (Qual.)/  
Commissioner for Declarations's signature)

(Signature of police officer preparing  
statement)

WARNING  
GRAPHIC CONTENT



P. J. THOMAS  
Sergeant 10829  
Townsville Police Station

P. J. THOMAS  
Sergeant 10829  
Townsville Police Station

WARNING  
GRAPHIC CONTENT

CONTENT  
WARNING  
GRAPHIC CONTENT

GRAPHIC